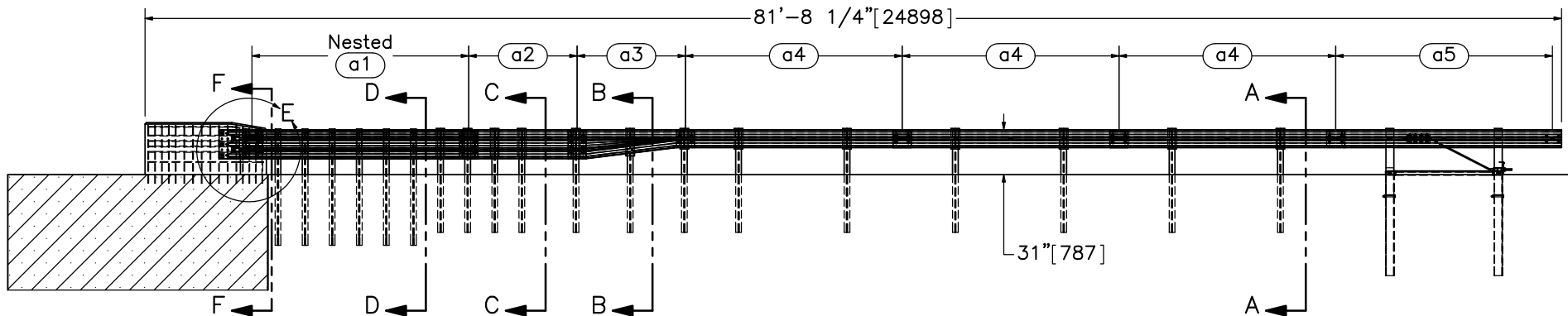


PLAN VIEW



ELEVATION VIEW

- Notes: (1) Test shall be performed according to MASH test designation no. 3-21.
 (2) The impact location is 89" [2,261] upstream of the buttress or 6" [152] upstream of centerline of post no. 17.
 (3) BCT anchors are placed in $\phi 3'$ [914] holes, then backfilled and tamped with soil.
 (4) Critical region is located between post nos. 12 and 21.



Midwest Roadside Safety Facility

Standardized AGT Buttress Test No. AGTB-2

System Layout

DWG. NAME:
AGT Buttress-2_R4

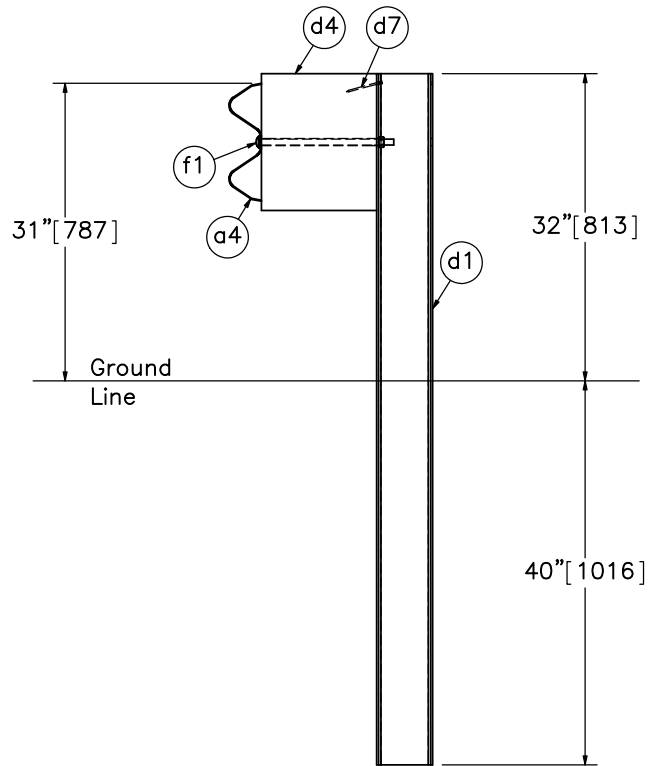
SCALE: 1:110
UNITS: in.[mm]

SHEET:
1 of 23

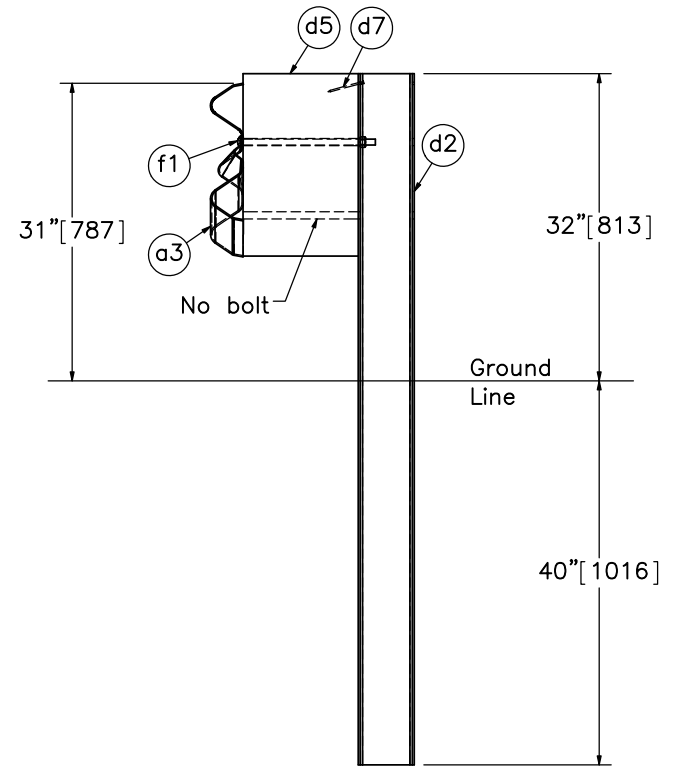
DATE:
5/12/2017

DRAWN BY:
JEK

REV. BY:
SKR/JCH/
KAL/RKF



SECTION A-A
Post Nos. 3-9



SECTION B-B
Post No. 10



Midwest Roadside
Safety Facility

Standardized AGT
Buttress
Test No. AGTB-2
Post Nos. 3-10 Details

DWG. NAME.
AGT Buttress-2_R4

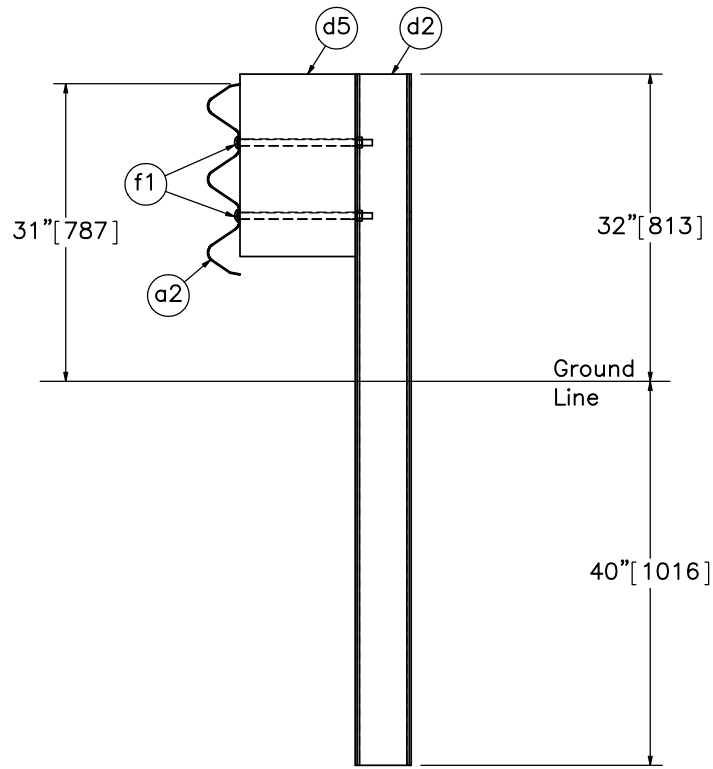
SCALE: 1:20
UNITS: in.[mm]

SHEET:
2 of 23

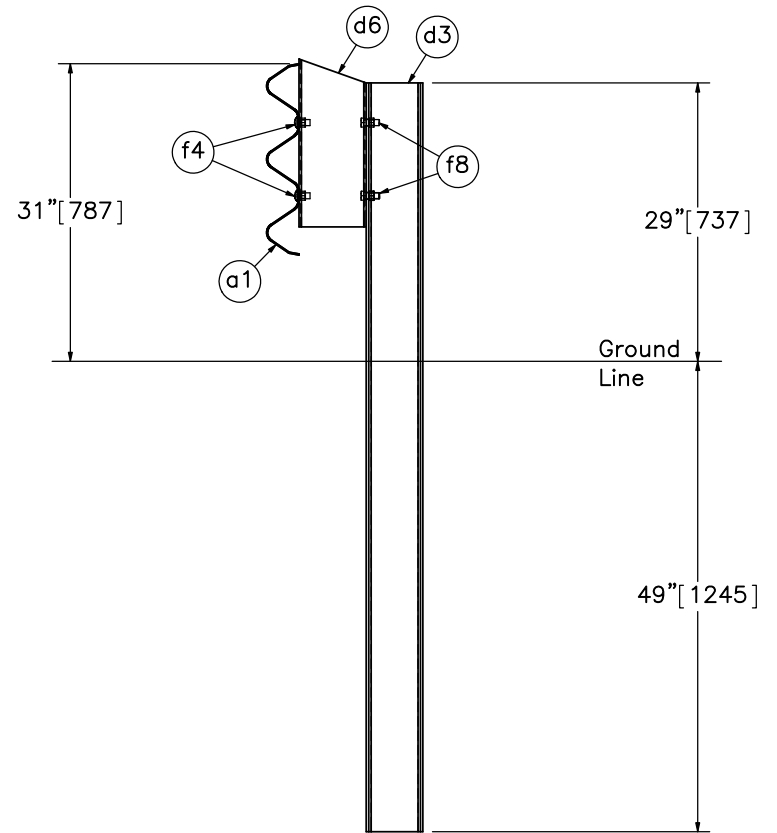
DATE:
5/12/2017

DRAWN BY:
JEK

REV. BY:
SKR/JCH/
KAL/RKF



SECTION C-C
Post Nos. 11-15



SECTION D-D
Post Nos. 16-21



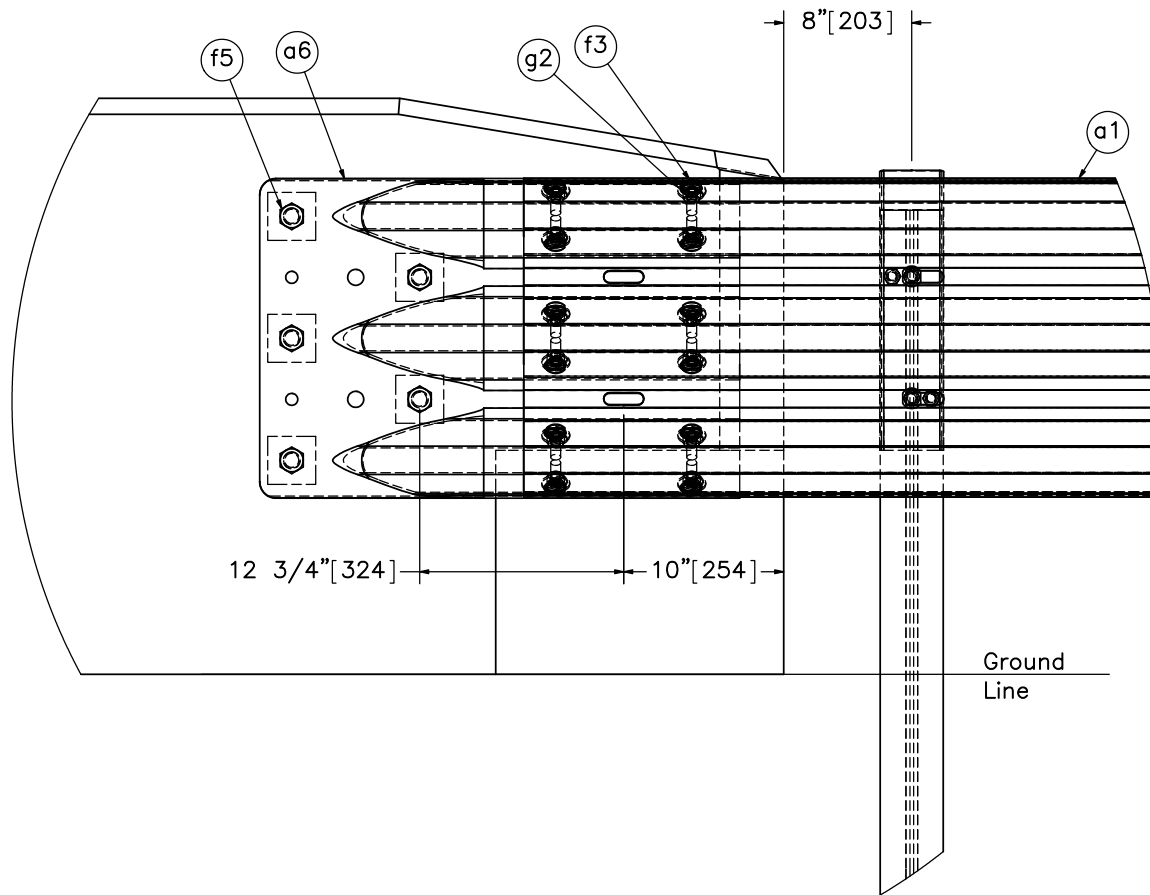
Midwest Roadside
Safety Facility

Standardized AGT
Buttress
Test No. AGTB-2
Post Nos. 11-21 Details

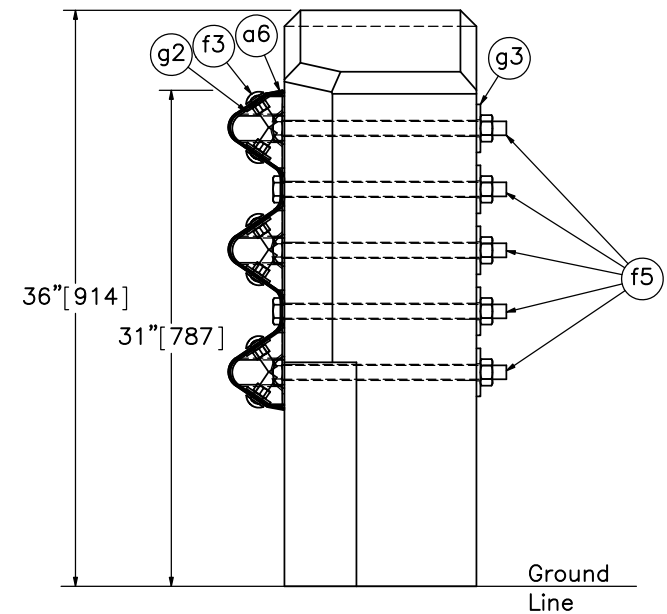
DWG. NAME.
AGT Buttress-2_R4

SCALE: 1:20
UNITS: in.[mm]

SHEET:
3 of 23
DATE:
5/12/2017
DRAWN BY:
JEK
REV. BY:
SKR/JCH/
KAL/RKF




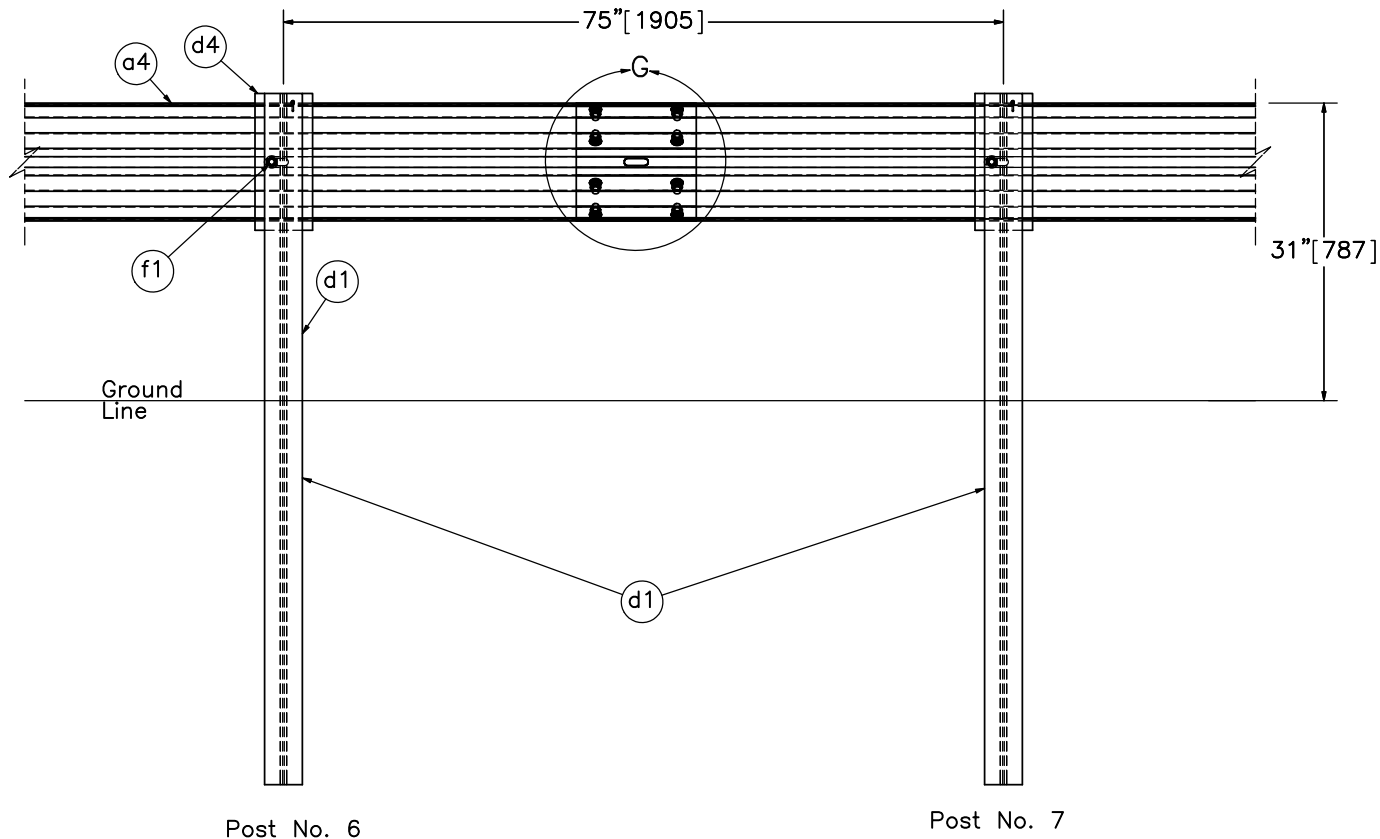
DETAIL E



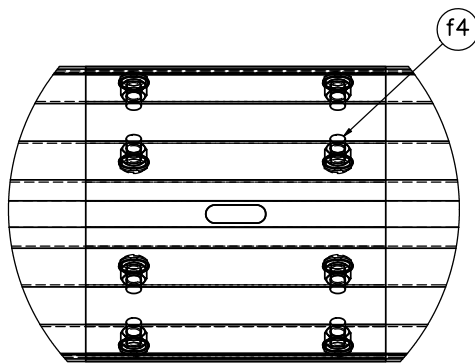
SECTION F-F

- Note: (1) g2 washers placed between nuts and thrie beam end connector.
 (2) f4 guardrail bolts may be used in place of f3 guardrail bolts in nested thrie beam splices if the nut can be fully threaded (dependent on thickness of stacked guardrail layers).
 (3) Buttress reinforcement hidden for clarity.

 Midwest Roadside Safety Facility	Standardized AGT Buttress Test No. AGTB-2	SHEET: 4 of 23
	Thrie Beam End Shoe and Buttress Details	DATE: 5/12/2017
DWG. NAME: AGT Buttress-2_R4	SCALE: 1:12 UNITS: in.[mm]	DRAWN BY: JEK
		REV. BY: SKR/JCH/ KAL/RKF




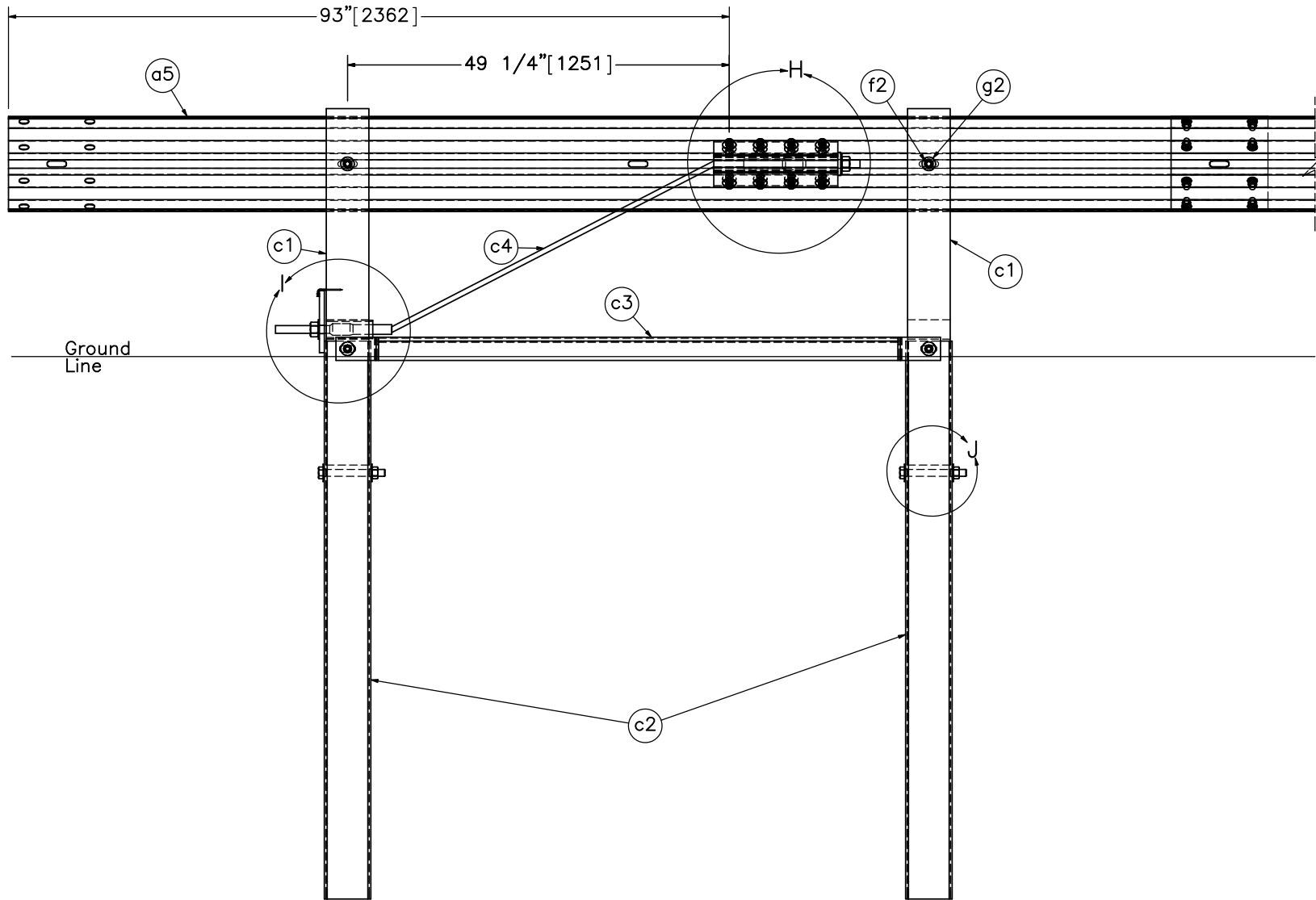
SPLICE DETAIL
BACKSIDE



DETAIL G
SCALE 1 : 8

Note: (1) Guardrail bolts (part f1) on the upstream side of the web.

 Midwest Roadside Safety Facility	Standardized AGT Buttress Test No. AGTB-2 Splice Detail	SHEET: 5 of 23
	DWG. NAME: AGT Buttress-2_R4	SCALE: 1:20 UNITS: in.[mm]



Post No. 1

Post No. 2

END SECTION DETAIL
BACKSIDE



Midwest Roadside
Safety Facility

Standardized AGT
Buttruss
Test No. AGTB-2

End Section Detail

DWG. NAME.
AGT Buttruss-2_R4

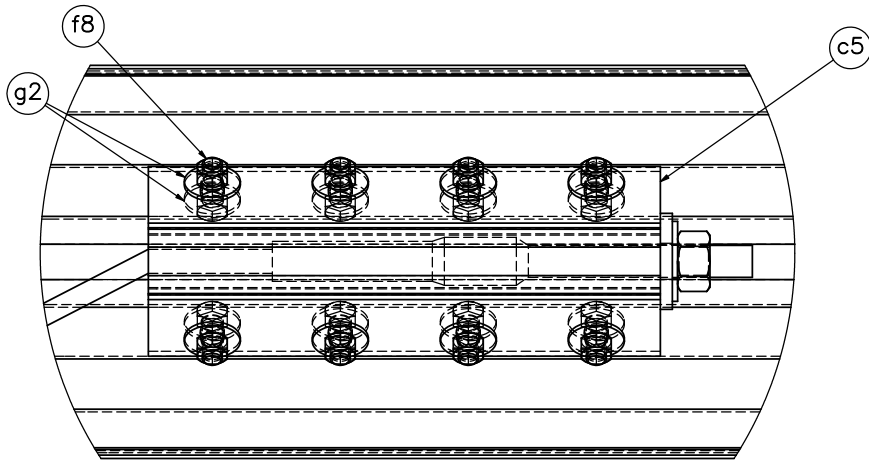
SCALE: 1:20
UNITS: in.[mm]

SHEET:
6 of 23

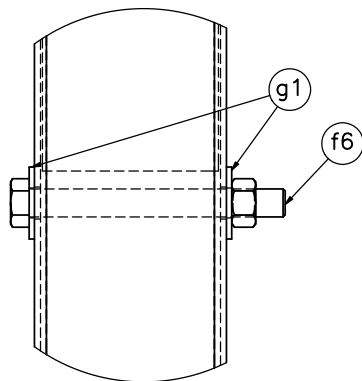
DATE:
5/12/2017

DRAWN BY:
JEK

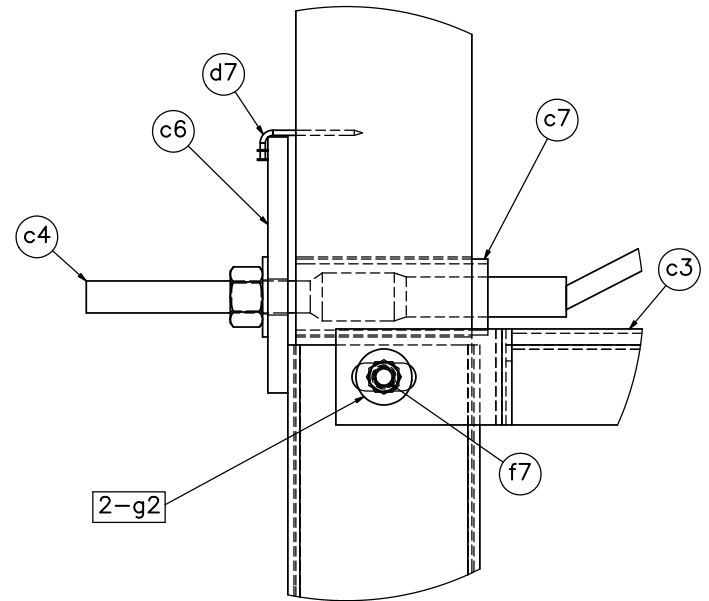
REV. BY:
SKR/JCH/
KAL/RKF



DETAIL H



DETAIL J



DETAIL I

Note: (1) Additional washer (part g2) on opposite side under the of bolt (part f7).



Midwest Roadside
Safety Facility

Standardized AGT
Buttress
Test No. AGTB-2

BCT Anchor Details

DWG. NAME.
AGT Buttress-2_R4

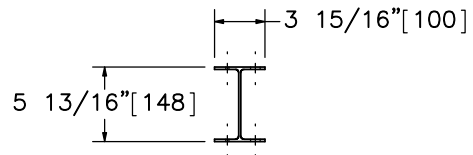
SCALE: 1:6
UNITS: in.[mm]

SHEET:
7 of 23

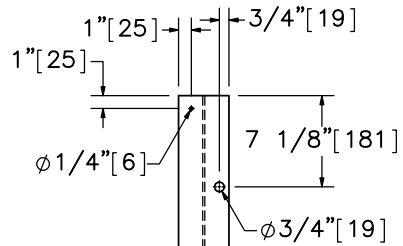
DATE:
5/12/2017

DRAWN BY:
JEK

REV. BY:
SKR/JCH/
KAL/RKF

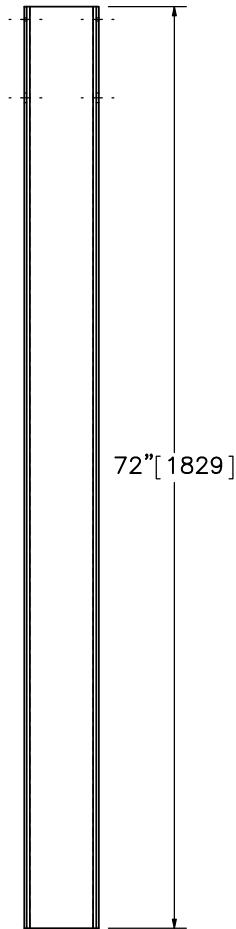


PLAN VIEW

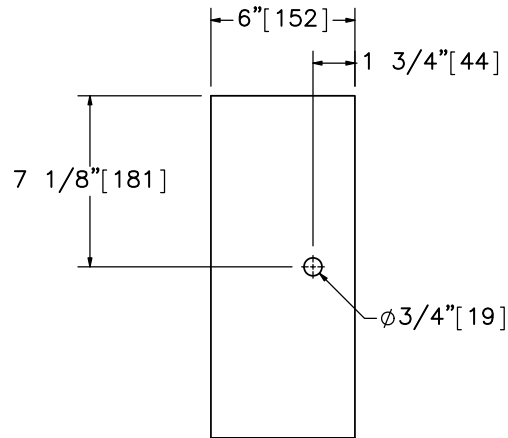


ELEVATION VIEW

Part d1

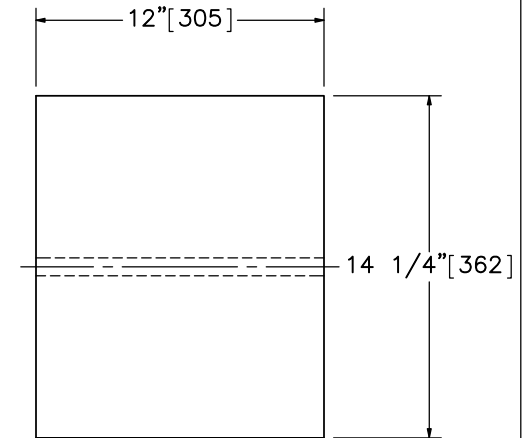


PROFILE VIEW

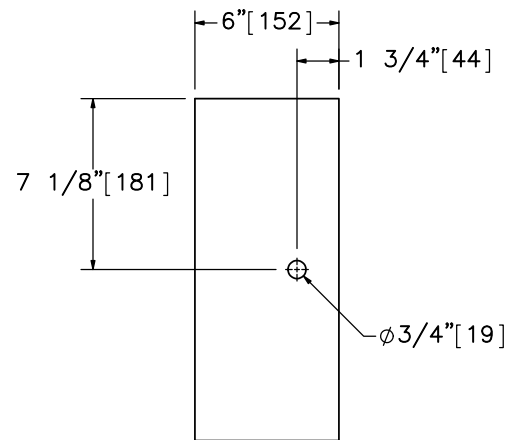


ELEVATION VIEW

Part d4
SCALE 1:8

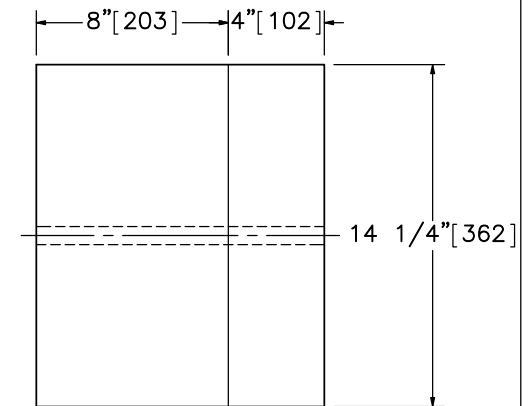


PROFILE VIEW



ELEVATION VIEW

Alternate Blockout Option
6"x4"x14 1/4" [152x102x362] Blockout
with 6"x8"x14 1/4" [152x203x362] Blockout
SCALE 1:8



PROFILE VIEW



Midwest Roadside
Safety Facility

Standardized AGT
Buttress
Test No. AGTB-2

Post Nos. 3-9 Components

DWG. NAME.
AGT Buttress-2_R4

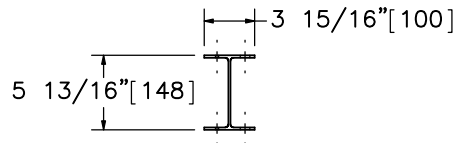
SCALE: 1:15
UNITS: in.[mm]

SHEET:
8 of 23

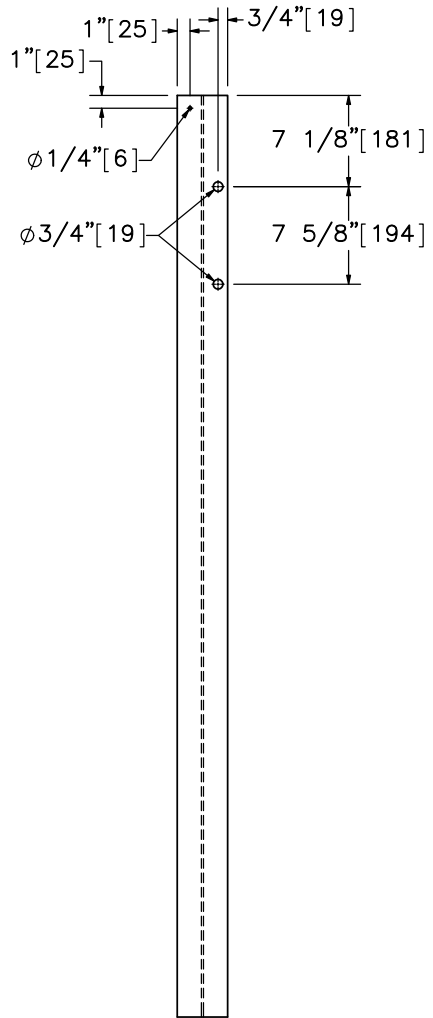
DATE:
5/12/2017

DRAWN BY:
JEK

REV. BY:
SKR/JCH/
KAL/RKF

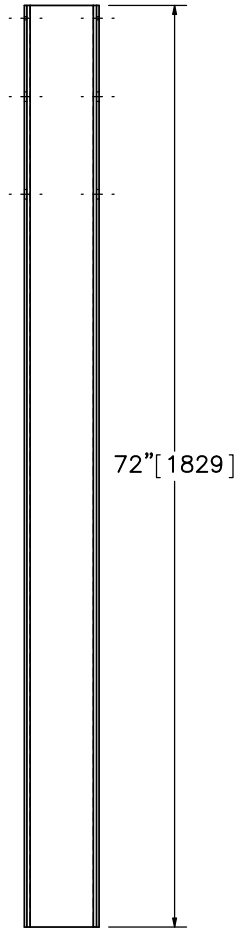


PLAN VIEW

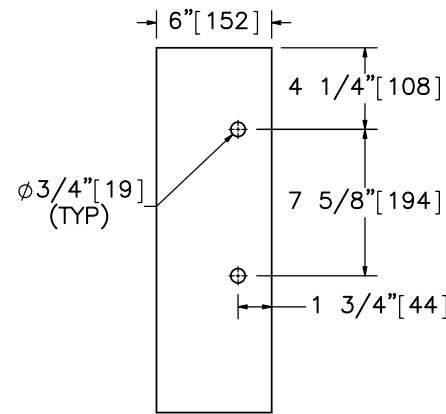


ELEVATION VIEW

Part d2

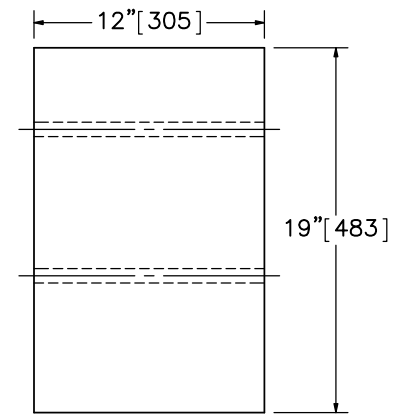


PROFILE VIEW

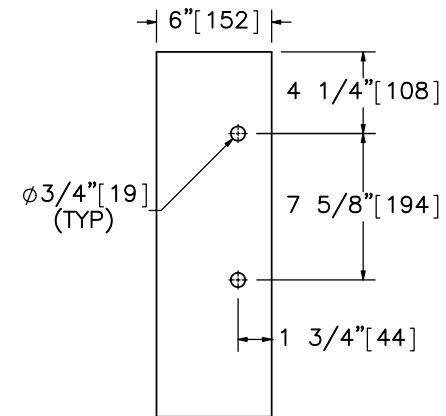


ELEVATION VIEW

Part d5
SCALE 1:10

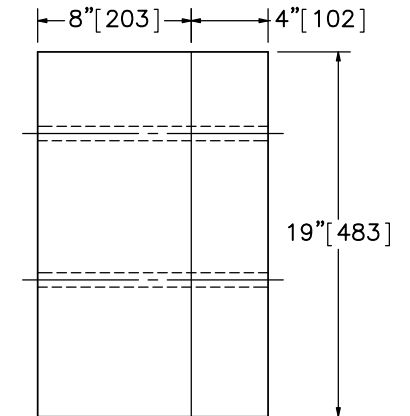


PROFILE VIEW



ELEVATION VIEW

Alternate Blockout Option
6"x4"x19" [152x102x483] Blockout
with 6"x8"x19" [152x203x483] Blockout
SCALE 1:10



PROFILE VIEW



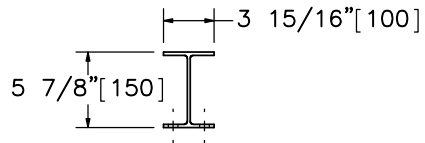
Midwest Roadside
Safety Facility

Standardized AGT
Buttress
Test No. AGTB-2
Post Nos. 10-15 Components

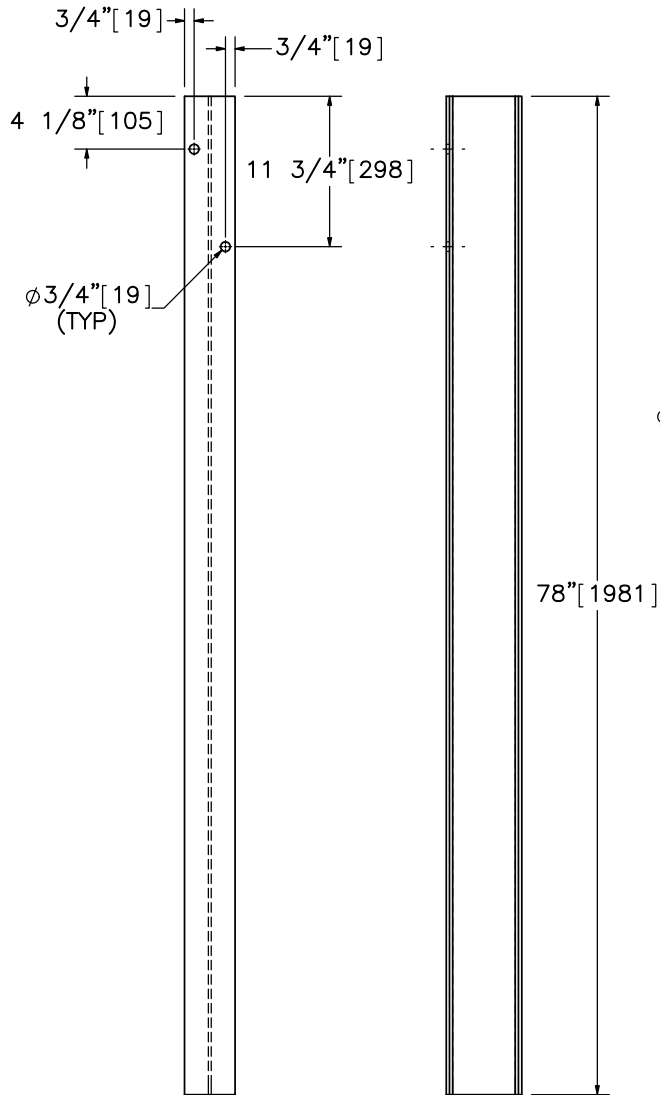
DWG. NAME.
AGT Buttress-2_R4

SCALE: 1:15
UNITS: in.[mm]

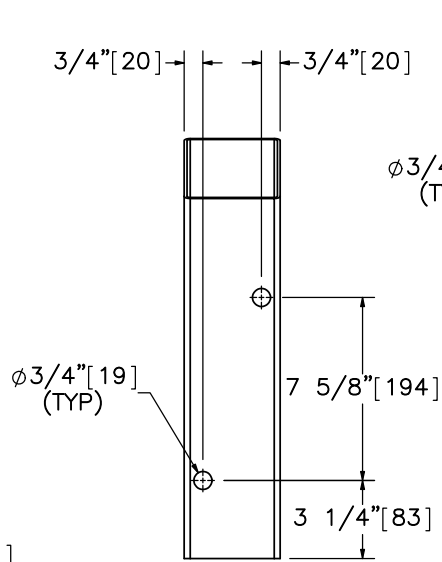
SHEET:
9 of 23
DATE:
5/12/2017
DRAWN BY:
JEK
REV. BY:
SKR/JCH/
KAL/RKF



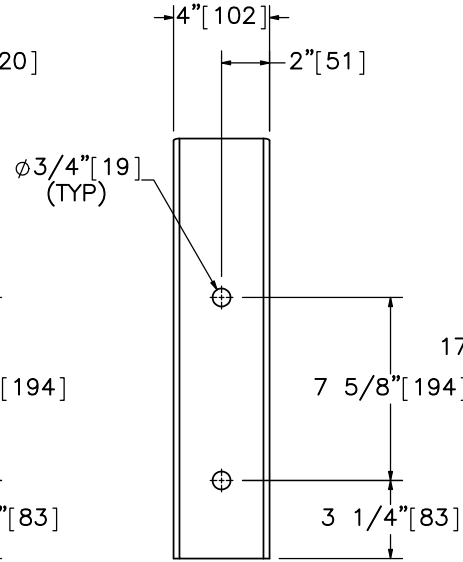
PLAN VIEW



ELEVATION VIEW PROFILE VIEW
Part d3

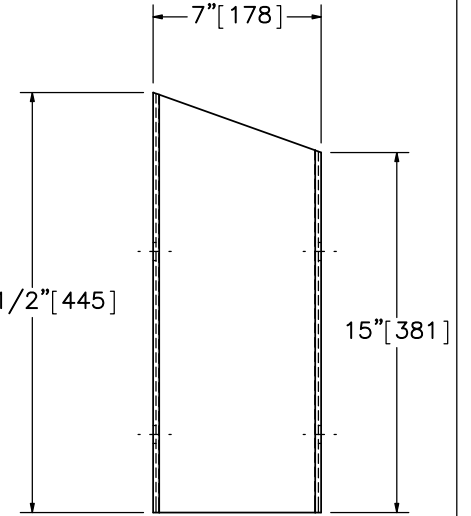


BACK VIEW



ELEVATION VIEW
SCALE 1 : 8

Part d6



PROFILE VIEW



Midwest Roadside
Safety Facility

Standardized AGT
Buttress
Test No. AGTB-2

Post Nos. 16-21 Components

DWG. NAME.
AGT Buttress-2_R4

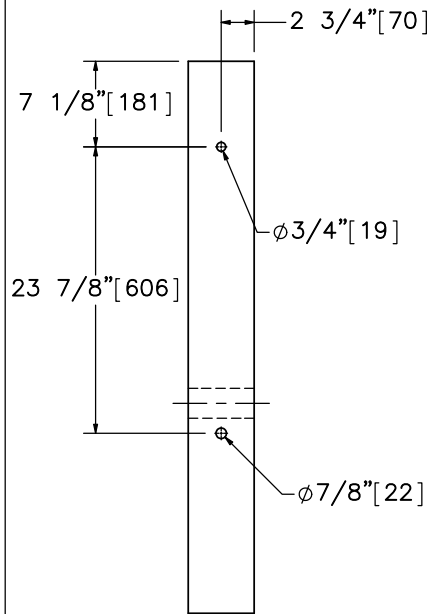
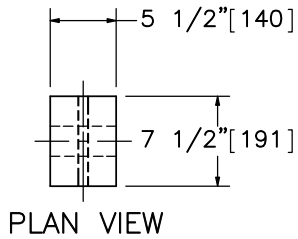
SCALE: 1:15
UNITS: in.[mm]

SHEET:
10 of 23

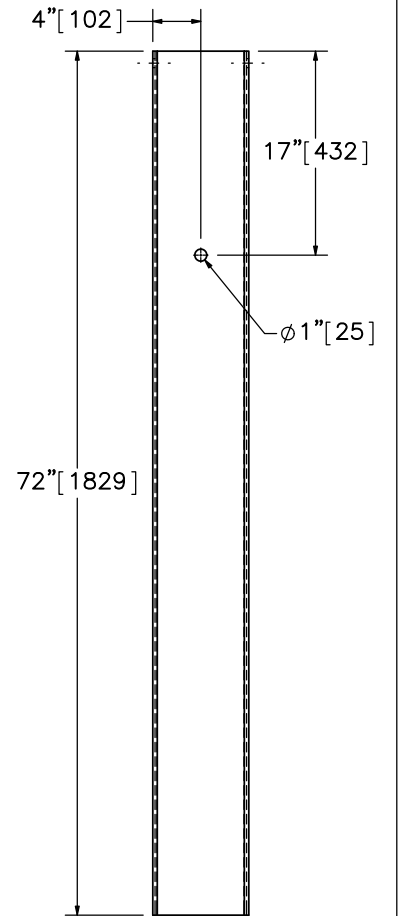
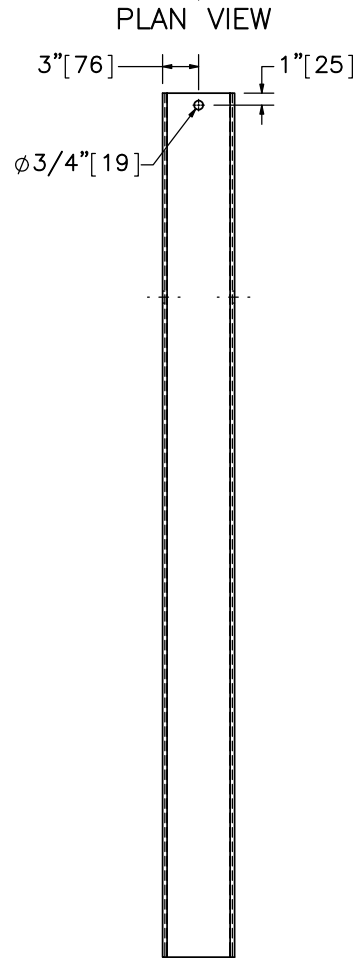
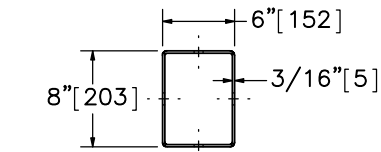
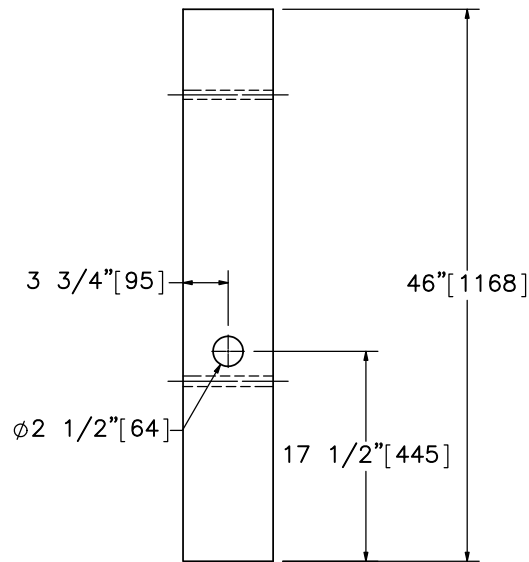
DATE:
5/12/2017

DRAWN BY:
JEK

REV. BY:
SKR/JCH/
KAL/RKF



Part c1



Part c2



Midwest Roadside
Safety Facility

Standardized AGT
Buttress
Test No. AGTB-2

BCT Timber Post and
Foundation Tube Details

DWG. NAME.
AGT Buttress-2_R4

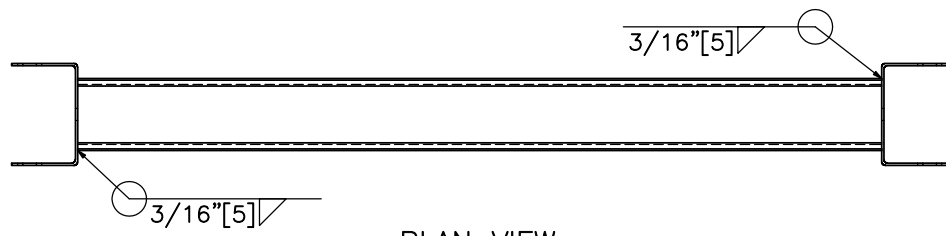
SCALE: 1:16
UNITS: in.[mm]

SHEET:
11 of 23

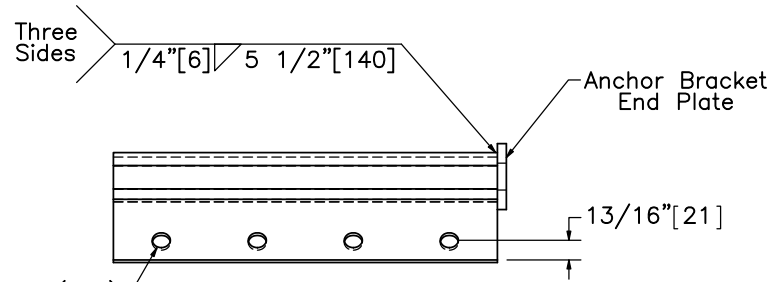
DATE:
5/12/2017

DRAWN BY:
JEK

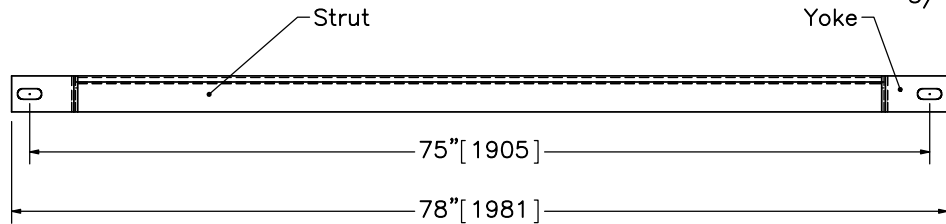
REV. BY:
SKR/JCH/
KAL/RKF



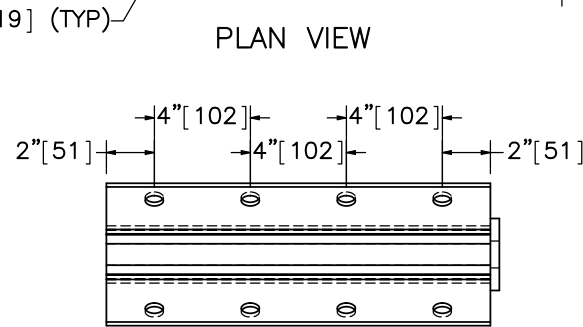
PLAN VIEW



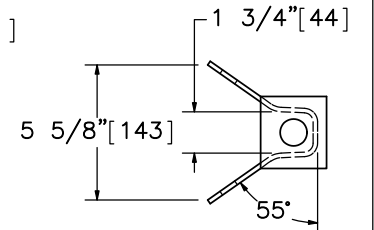
PLAN VIEW



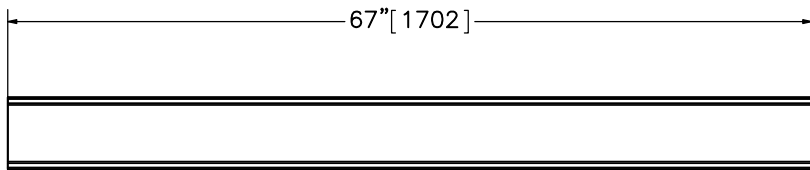
ELEVATION VIEW
Part c3



ELEVATION VIEW

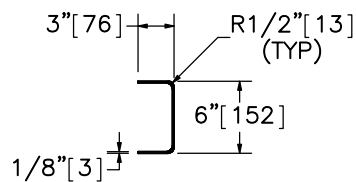


PROFILE VIEW



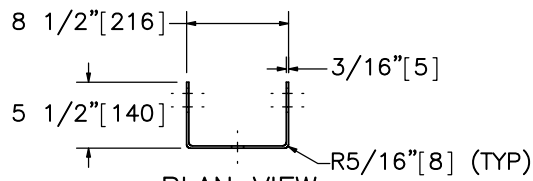
ELEVATION VIEW

6"x3" [152x76] 10 Gauge [3.4] Strut

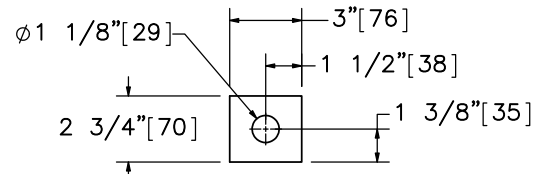


PROFILE VIEW

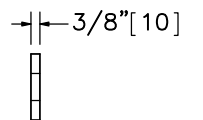
Part c5
SCALE 1:8



PLAN VIEW

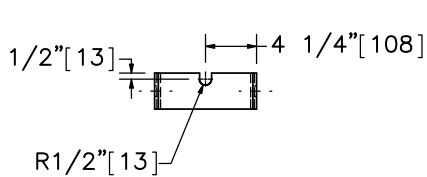


ELEVATION VIEW



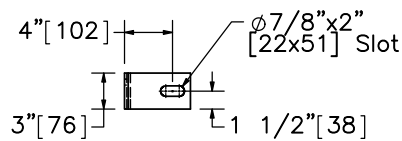
PROFILE VIEW

Anchor Bracket End Plate
SCALE 1:8



ELEVATION VIEW

Yoke



PROFILE VIEW



Midwest Roadside
Safety Facility

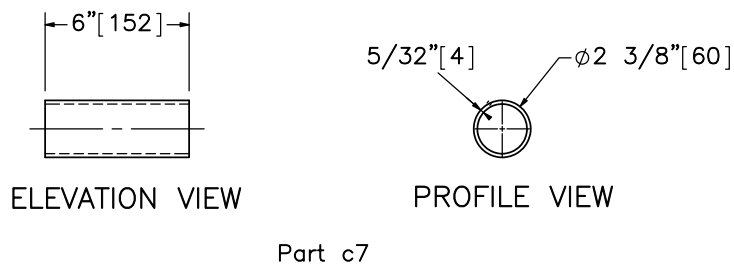
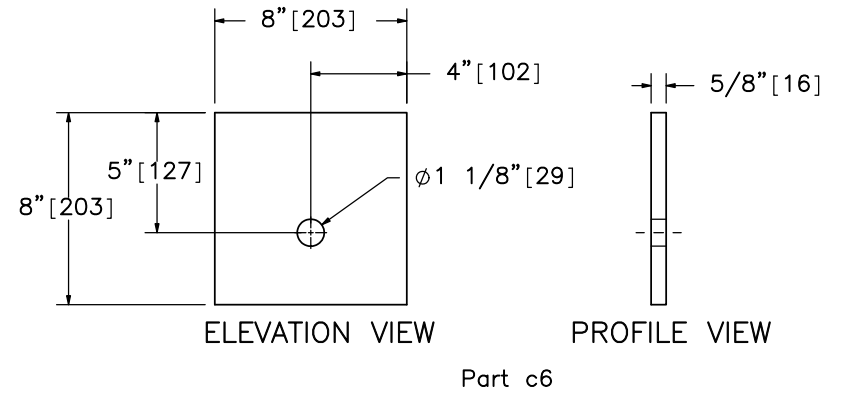
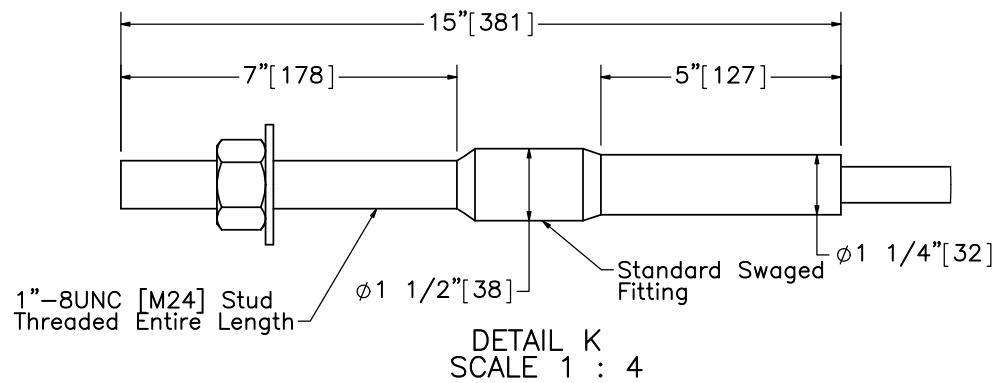
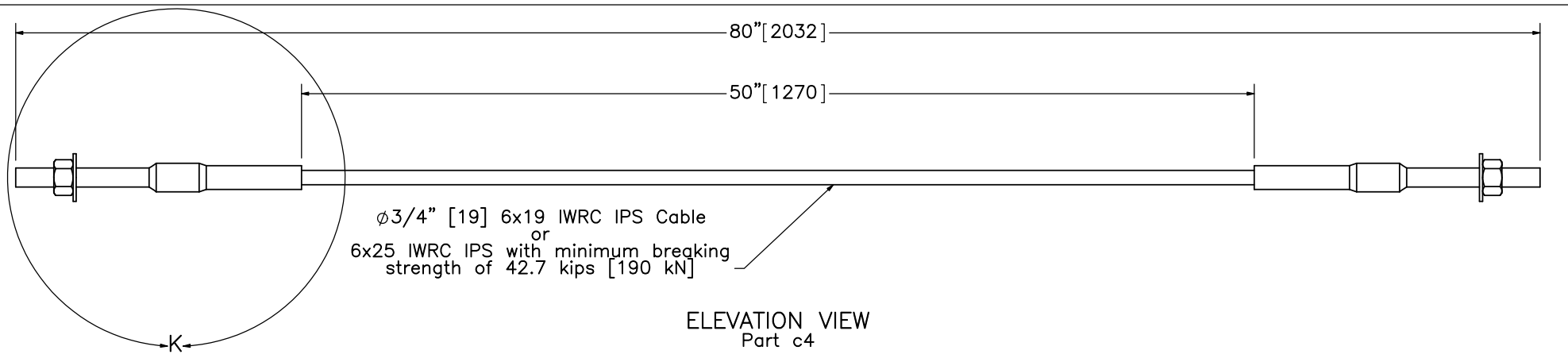
Standardized AGT
Buttress
Test No. AGTB-2

Ground Strut Details

DWG. NAME:
AGT Buttress-2_R4

SCALE: 1:16
UNITS: in.[mm]

SHEET:
12 of 23
DATE:
5/12/2017
DRAWN BY:
JEK
REV. BY:
SKR/JCH/
KAL/RKF



Midwest Roadside Safety Facility

Standardized AGT
Buttress
Test No. AGTB-2

BCT Anchor Cable

DWG. NAME:
AGT Buttress-2_R4

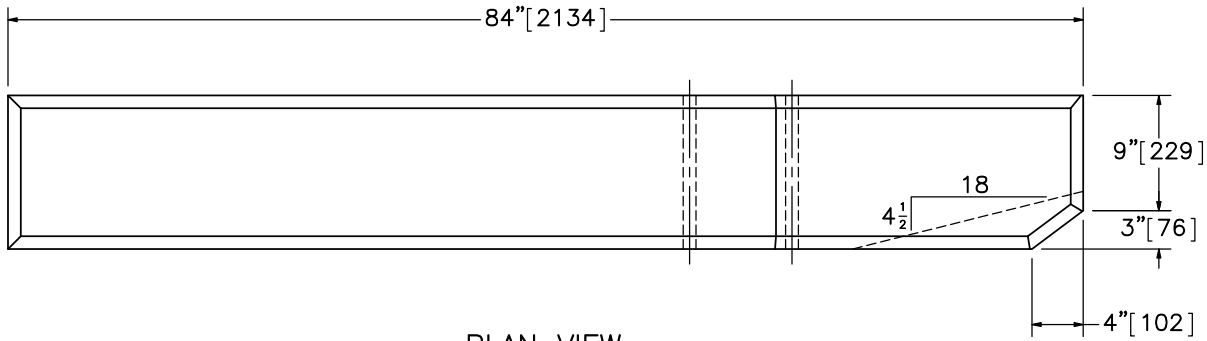
SCALE: 1:8
UNITS: in.[mm]

SHEET:
13 of 23

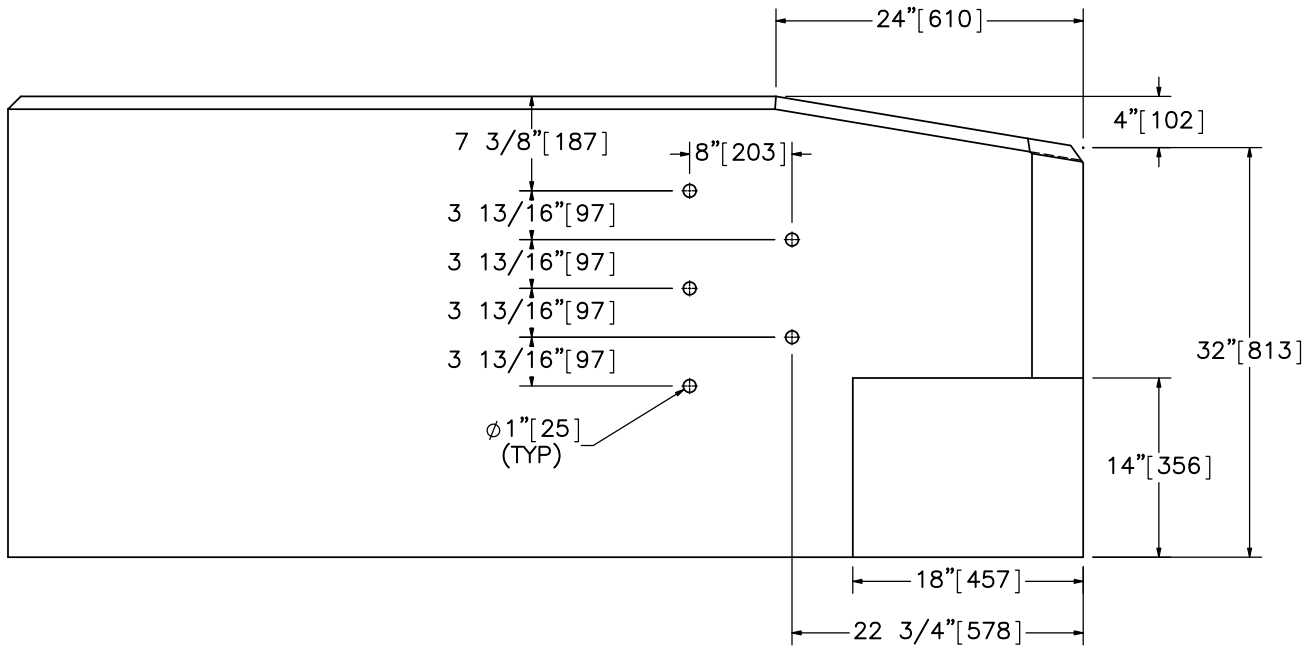
DATE:
5/12/2017

DRAWN BY:
JEK

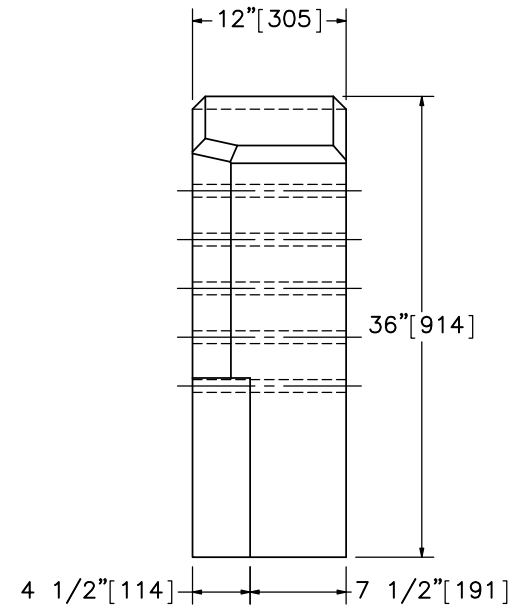
REV. BY:
SKR/JCH/
KAL/RKF



PLAN VIEW



ELEVATION VIEW



PROFILE VIEW

Part b1

- Note: (1) Lower setback has lateral flare of 1:4.
 (2) Five 1" [25] diameter holes are required for placement of 7/8" [22] diameter bolts.
 (3) All edges of the top of the buttress are chamfered 1" [25].



Midwest Roadside
Safety Facility

Standardized AGT
Buttress
Test No. AGTB-2

Buttress Details

DWG. NAME.
AGT Buttress-2_R4

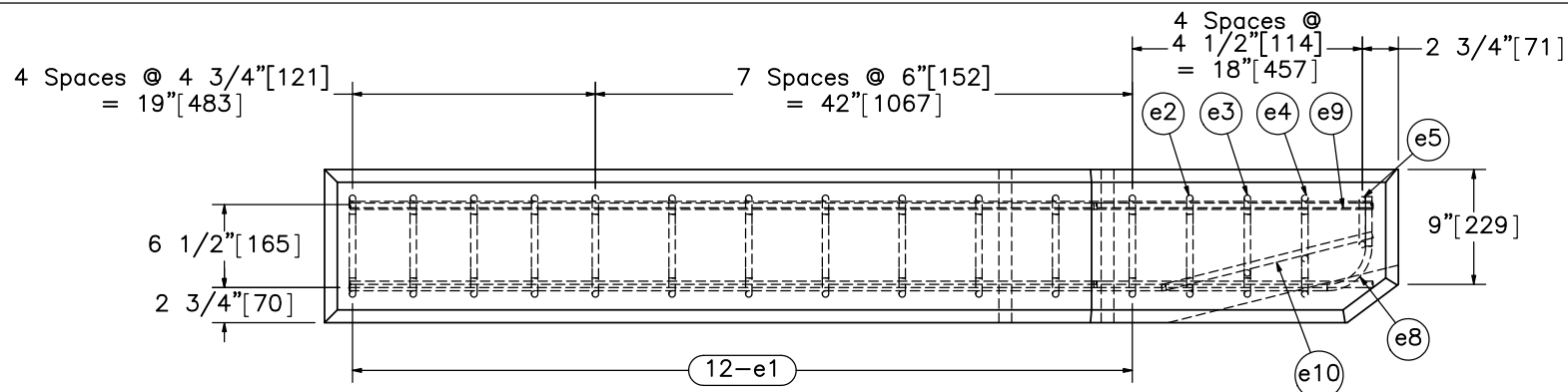
SCALE: 1:15
UNITS: in.[mm]

SHEET:
14 of 23

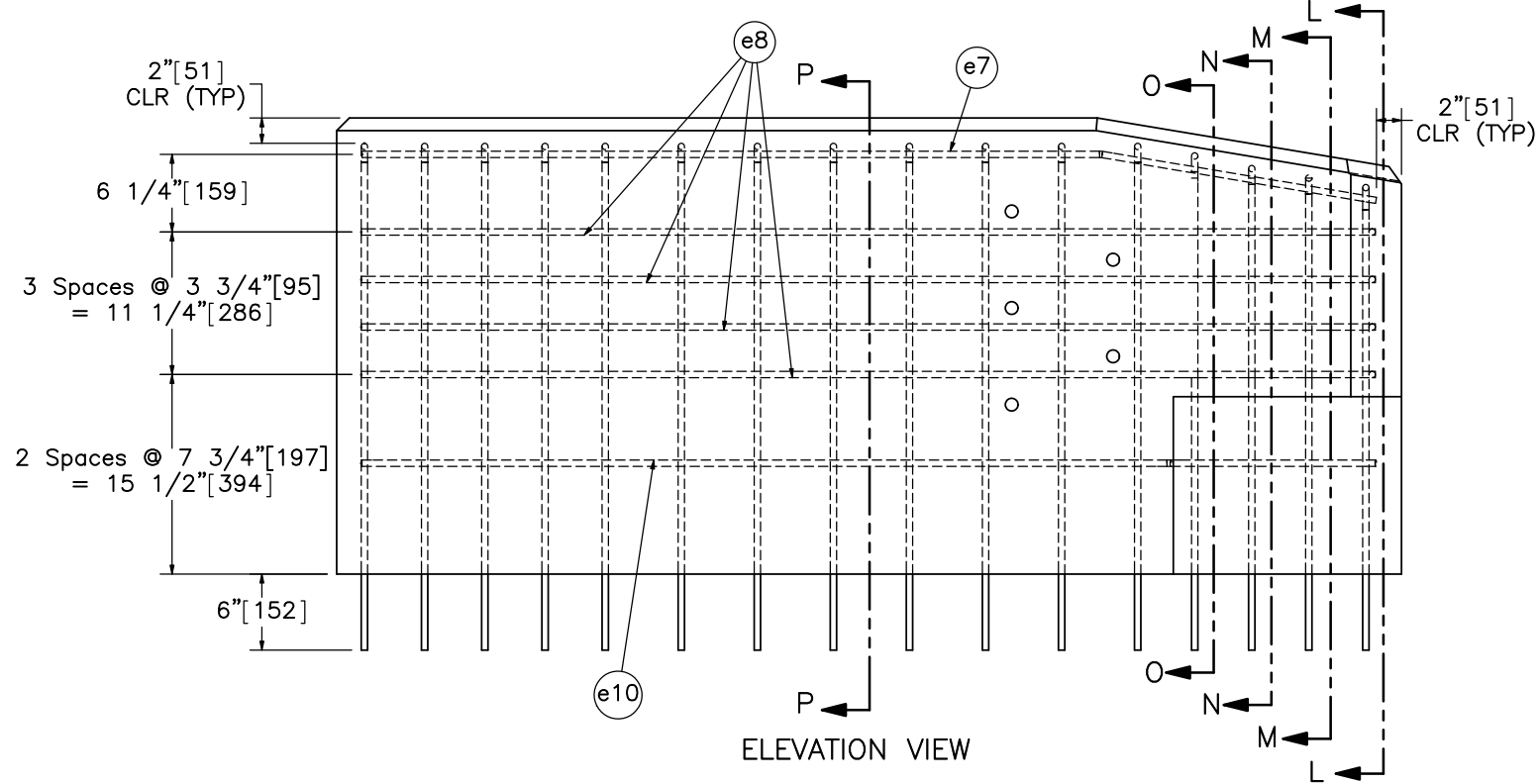
DATE:
5/12/2017

DRAWN BY:
JEK

REV. BY:
SKR/JCH/
KAL/RKF



PLAN VIEW



ELEVATION VIEW

- Note: (1) Vertical rebar embedded in tarmac with chemical epoxy adhesive with a minimum bond strength of 1,450 psi [10.0 MPa].
 (2) All edges of the top of the buttress are chamfered 1" [25].



Midwest Roadside Safety Facility

Standardized AGT Buttress Test No. AGTB-2

Rebar Detail

DWG. NAME:
AGT Buttress-2_R4

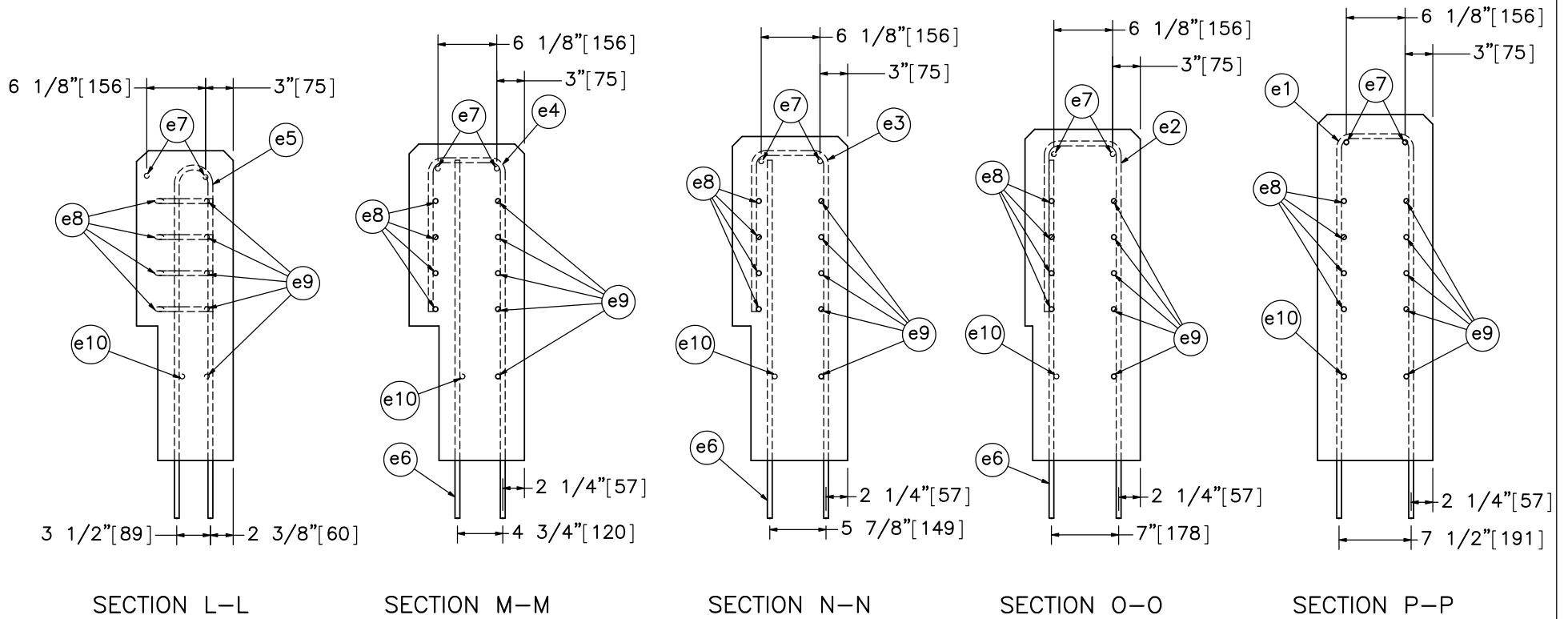
SCALE: 1:15
UNITS: in.[mm]

SHEET:
15 of 23

DATE:
5/12/2017

DRAWN BY:
JEK

REV. BY:
SKR/JCH/
KAL/RKF



Note: (1) All stirrups have minimum 2" [51] concrete clear cover.



Midwest Roadside
Safety Facility

Standardized AGT
Buttress
Test No. AGTB-2

Rebar Detail Sections

DWG. NAME.
AGT Buttress-2_R4

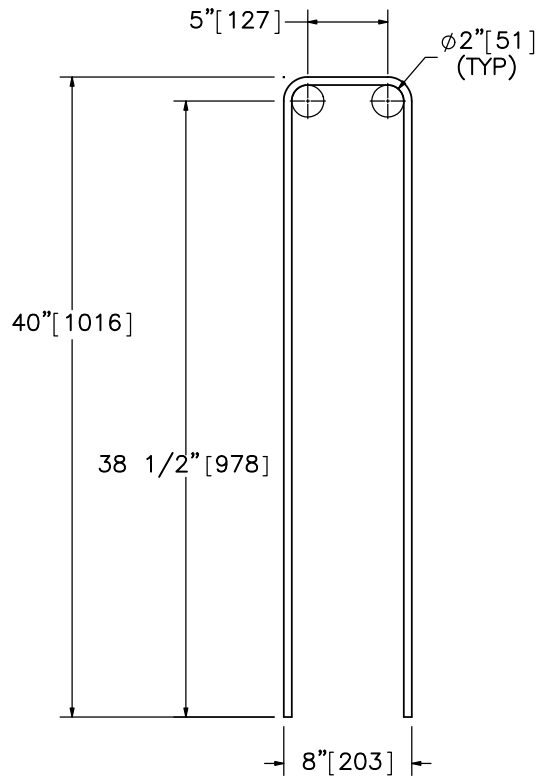
SCALE: 1:16
UNITS: in.[mm]

SHEET:
16 of 23

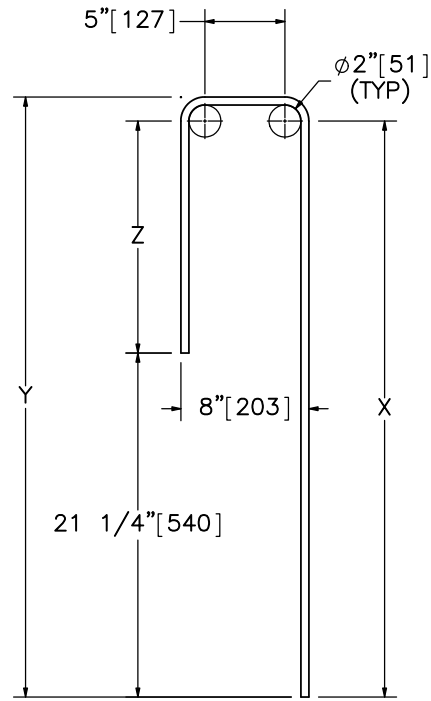
DATE:
5/12/2017

DRAWN BY:
JEK

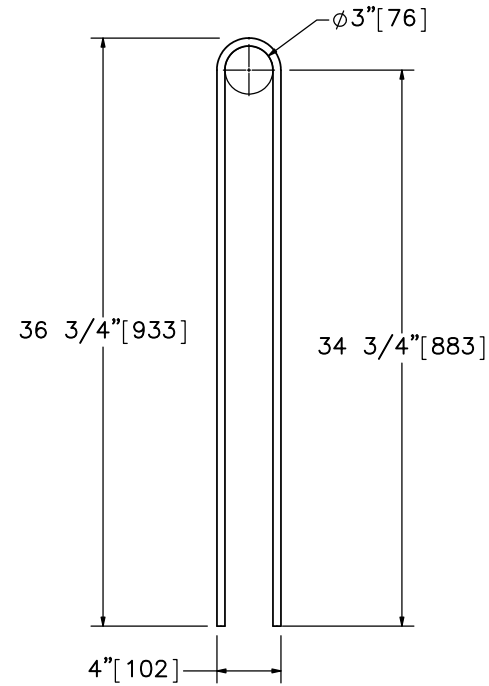
REV. BY:
SKR/JCH/
KAL/RKF



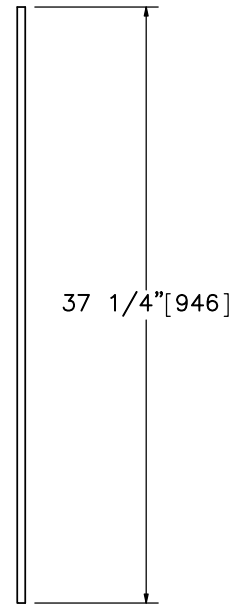
Bar e1



Bars e2, e3, e4



Bar e5



Bar e6

Bill of Bars

Bar No.	QTY	Size	X	Y	Z	Unbent Length
e1	12	#4	38 1/2" [978]	40" [1,016]	-	86" [2,184]
e2	1	#4	37 1/2" [953]	39" [991]	16 1/4" [413]	62 3/4" [1,594]
e3	1	#4	36 1/2" [927]	38" [965]	15 1/4" [387]	60 1/2" [1,537]
e4	1	#4	35 3/4" [908]	37 1/4" [946]	14 1/2" [368]	59 1/4" [1,505]
e5	1	#4	34 3/4" [883]	36 3/4" [933]	-	74 3/4" [1,899]
e6	3	#4	-	-	-	37 1/4" [946]



Midwest Roadside Safety Facility

Standardized AGT
Buttress
Test No. AGTB-2

Vertical Bar Details

DWG. NAME:
AGT Buttress-2_R4

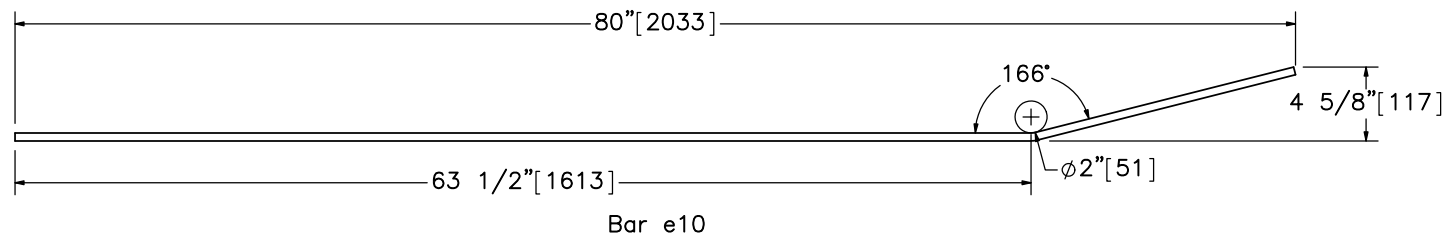
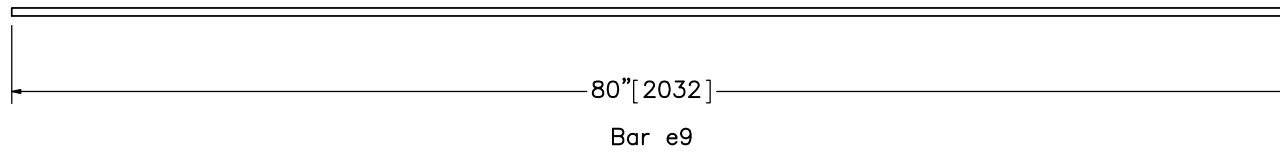
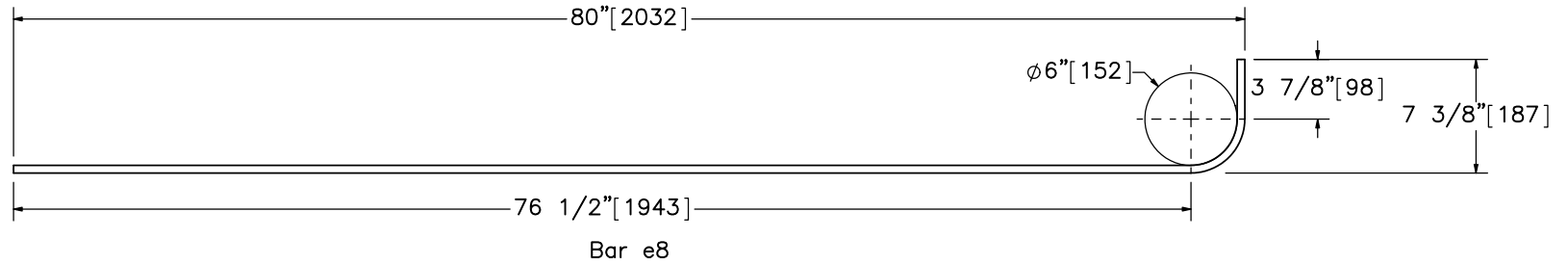
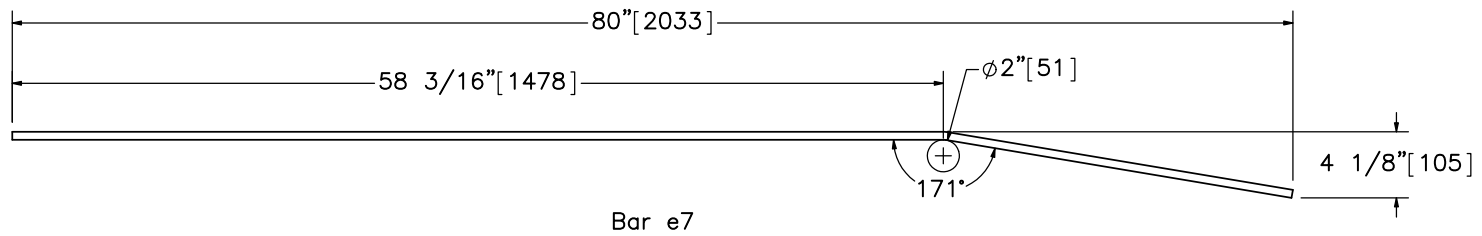
SCALE: 1:12
UNITS: in.[mm]

SHEET:
17 of 23

DATE:
5/12/2017

DRAWN BY:
JEK

REV. BY:
SKR/JCH/
KAL/RKF



Bill of Bars			
Bar No.	Qty.	Size	Unbent Length
e7	2	#4	80 1/4" [2,038]
e8	4	#4	85 1/2" [2,171]
e9	5	#4	80" [2,032]
e10	1	#4	80 1/2" [2,045]



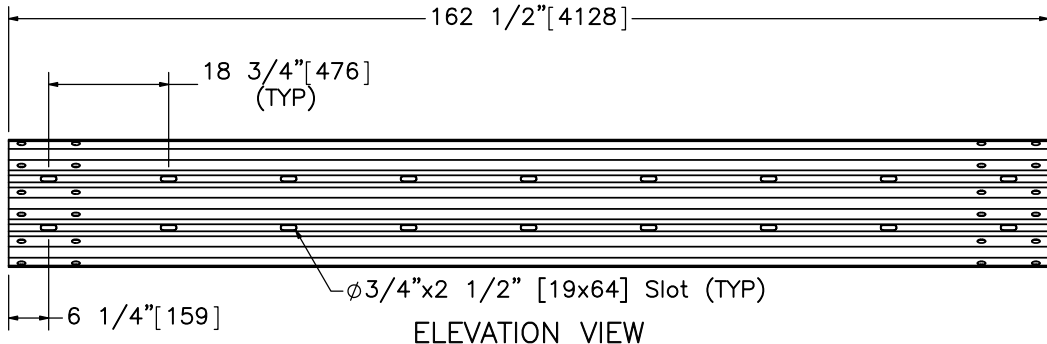
Midwest Roadside Safety Facility

Standardized AGT
Buttress
Test No. AGTB-2
Horizontal Rebar Details

DWG. NAME:
AGT Buttress-2_R4

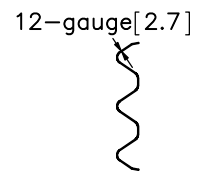
SCALE: 1:12
UNITS: in.[mm]

SHEET:
18 of 23
DATE:
5/12/2017
DRAWN BY:
JEK
REV. BY:
SKR/JCH/
KAL/RKF

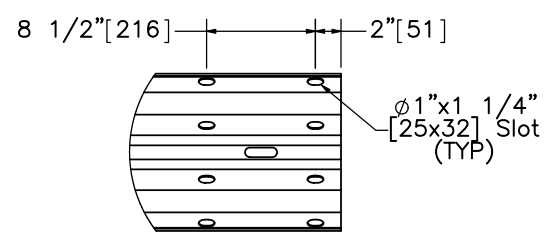


ELEVATION VIEW

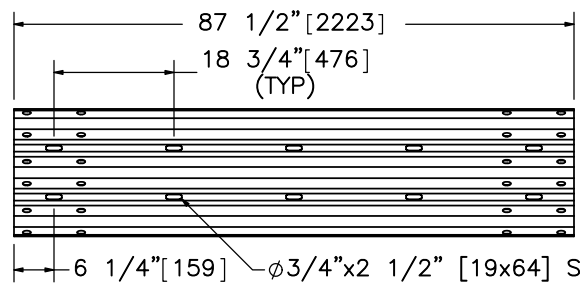
Part a1



PROFILE VIEW

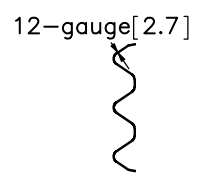


DETAIL Q
SCALE 1 : 15

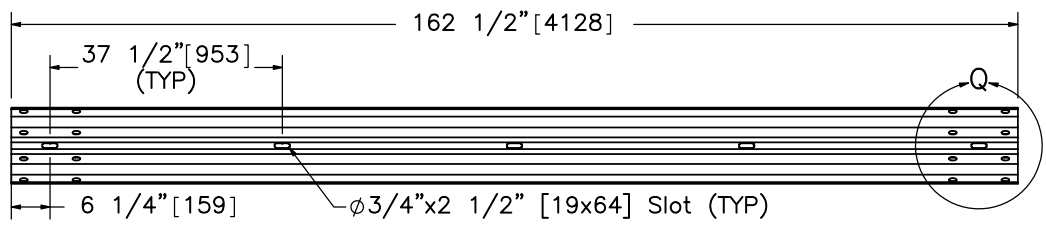


ELEVATION VIEW

Part a2

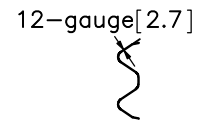


PROFILE VIEW

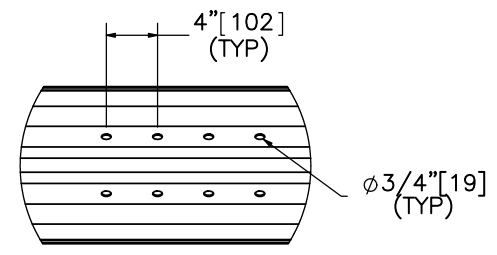


ELEVATION VIEW

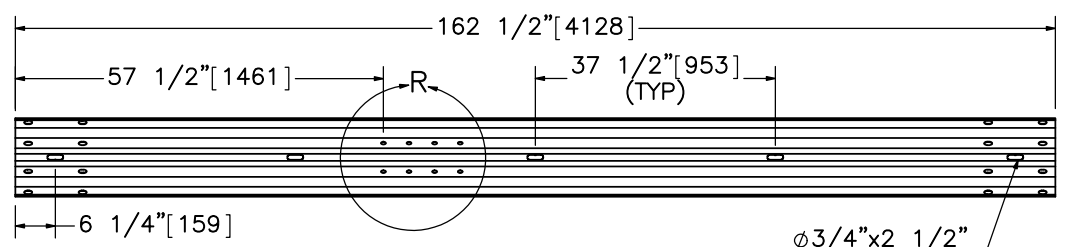
Part a4



PROFILE VIEW

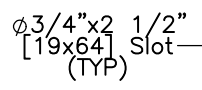


DETAIL R
SCALE 1 : 15



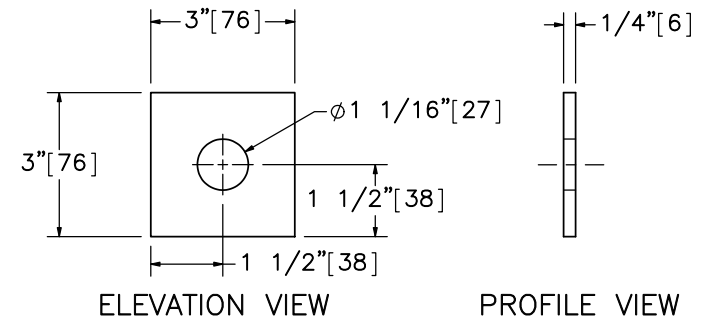
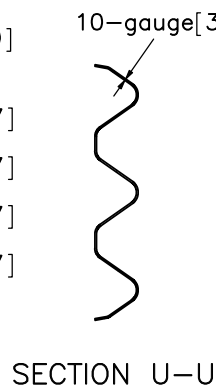
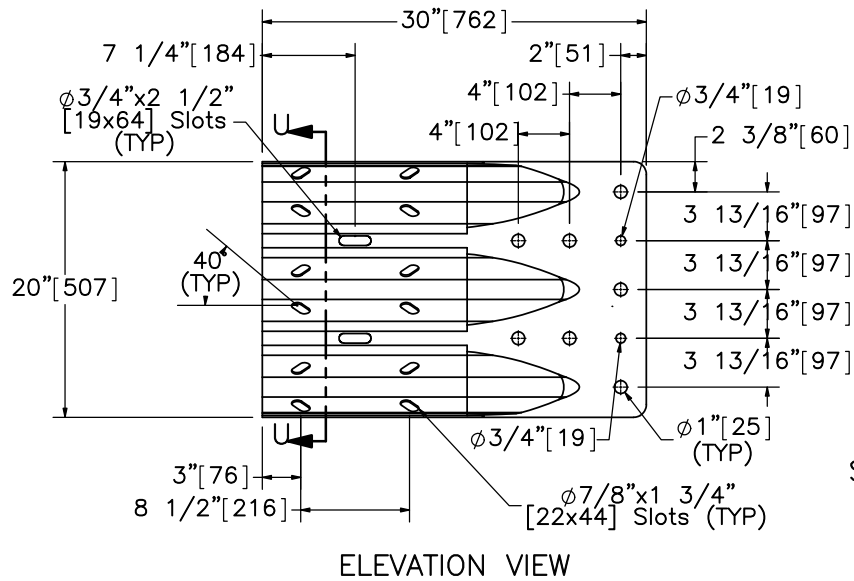
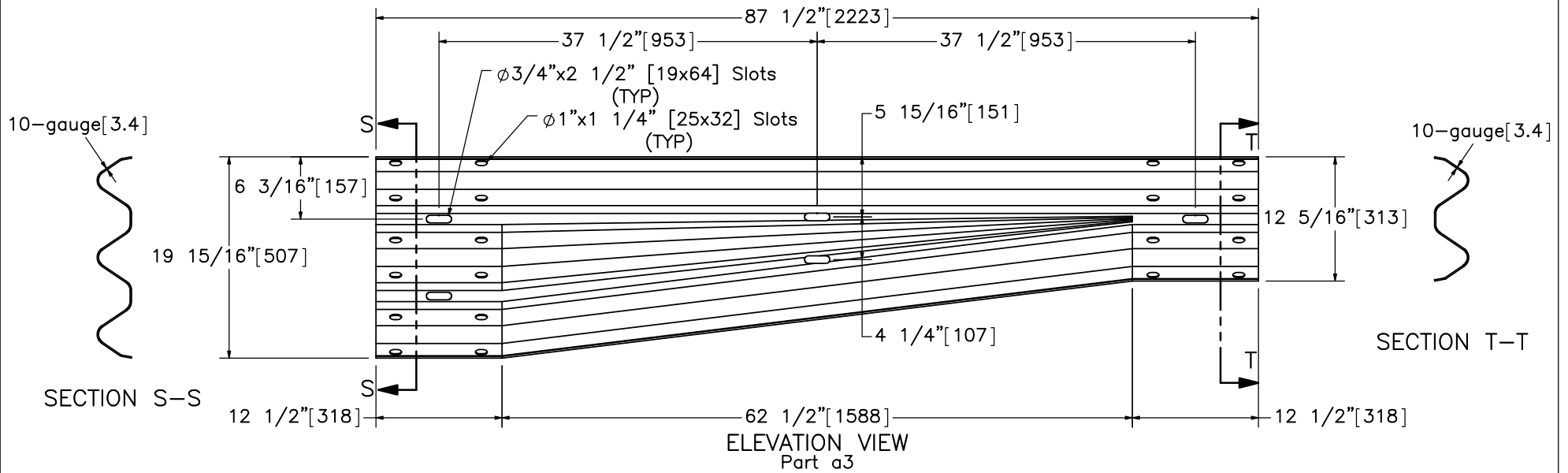
ELEVATION VIEW

Part a5




Midwest Roadside Safety Facility

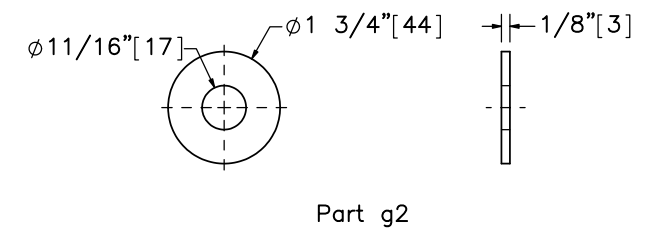
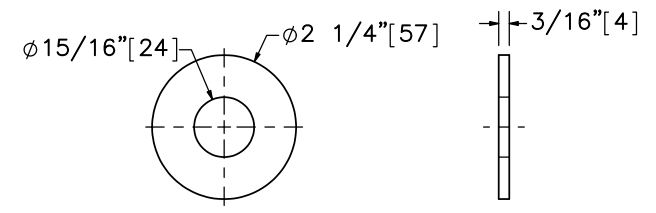
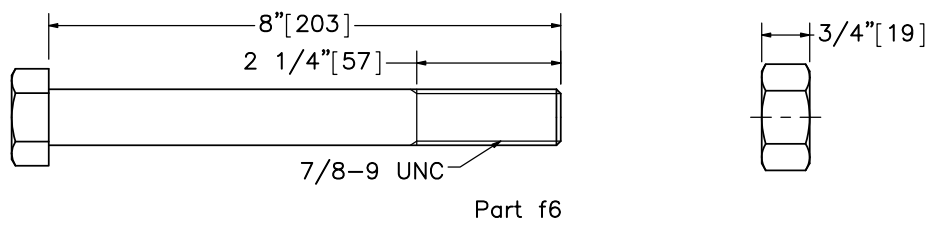
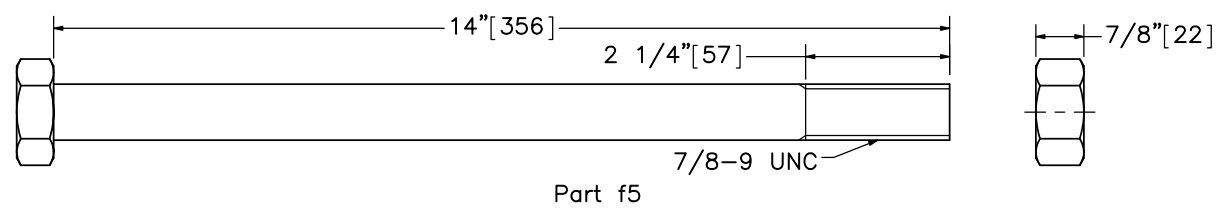
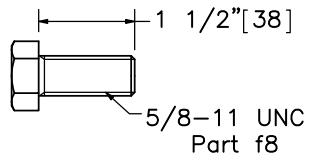
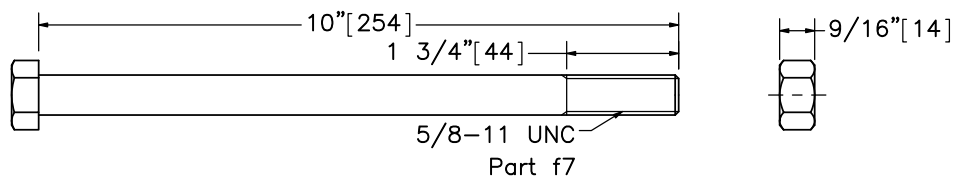
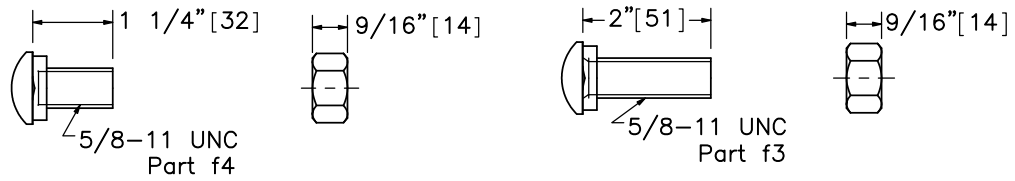
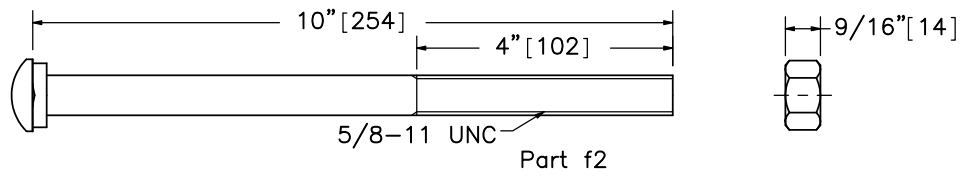
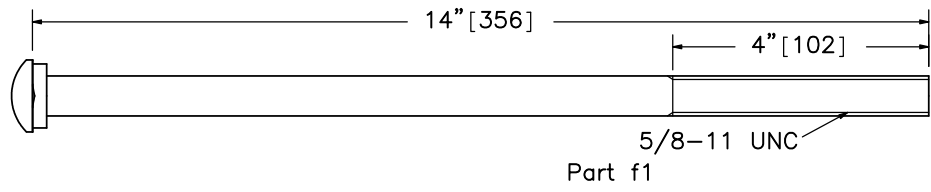
Standardized AGT Buttress Test No. AGTB-2		SHEET: 19 of 23
Guardrail Section Details		DATE: 5/12/2017
DWG. NAME: AGT Buttress-2_R4		DRAWN BY: JEK
SCALE: 1:30 UNITS: in.[mm]	REV. BY: SKR/JCH/ KAL/RKF	



Midwest Roadside
 Safety Facility

Standardized AGT
 Buttress
 Test No. AGTB-2
 Rail Transition and Component
 Details
 DWG. NAME:
 AGT Buttress-2_R4
 SCALE: 1:15
 UNITS: in.[mm]

SHEET:
 20 of 23
 DATE:
 5/12/2017
 DRAWN BY:
 JEK
 REV. BY:
 SKR/JCH/
 KAL/RKF



Midwest Roadside Safety Facility

Standardized AGT
Buttress
Test No. AGTB-2
Hardware
DWG. NAME:
AGT Buttress-2_R4

SHEET:
21 of 23
DATE:
5/12/2017
DRAWN BY:
JEK
REV. BY:
SKR/JCH/
KAL/RKF

SCALE: 1:3
UNITS: in.[mm]

Item No.	QTY.	Description	Material Spec	Galvanization Spec	Hardware Guide
a1	2	12'-6" [3,810] 12-gauge [2.7] Thrie Beam Section	AASHTO M180	ASTM A123 or A653	RTM08a
a2	1	6'-3" [1,905] 12-gauge [2.7] Thrie Beam Section	AASHTO M180	ASTM A123 or A653	RTM19a
a3	1	6'-3" [1905] 10-gauge [3.4] W-Beam to Thrie-Beam Asymmetric Transition Section	AASHTO M180	ASTM A123 or A653	RWT02
a4	3	12'-6" [3,810] 12-gauge [2.7] W-Beam MGS Section	AASHTO M180	ASTM A123 or A653	RWM04a
a5	1	12'-6" [3,810] 12-gauge [2.7] W-Beam MGS End Section	AASHTO M180	ASTM A123 or A653	RWM14a
a6	1	10-gauge [3.4] Thrie Beam Terminal Connector	AASHTO M180 Min. yield strength = 50 ksi [345 MPa] Min. ultimate strength = 70 ksi [483 MPa]	ASTM A123 or A653	RTE01b
b1	1	Concrete - 21.9 cubic ft [0.62 cubic m]	Min. f'c = 4,000 psi [27.6 MPa]	-	-
c1	2	BCT Timber Post - MGS Height	SYP Grade No. 1 or better (No knots +/- 18" [457] from ground on tension face)	-	PDF01
c2	2	72" [1,829] Long Foundation Tube	ASTM A500 Gr. B	*ASTM A123	PTE06
c3	1	Ground Strut Assembly	ASTM A36	*ASTM A123	PFPO2
c4	1	BCT Cable Anchor Assembly	-	-	FCA01
c5	1	Anchor Bracket Assembly	ASTM A36	*ASTM A123	FPA01
c6	1	8"x8"x5/8" [203x203x16] Anchor Bearing Plate	ASTM A36	*ASTM A123	FPB01
c7	1	2 3/8" [60] O.D. x 6" [152] Long BCT Post Sleeve	ASTM A53 Gr. B Schedule 40	*ASTM A123	FMM02
d1	7	W6x8.5 [W152x12.6] or W6x9 [W152x13.4], 72" [1,829] Long Steel Post	ASTM A992	*ASTM A123	PWE06
d2	6	W6x8.5 [W152x12.6] or W6x9 [W152x13.4], 72" [1,829] Long Steel Post	ASTM A992	*ASTM A123	PWE06
d3	6	W6x8.5 [W152x12.6] or W6x9 [W152x13.4], 78" [1,981] Long Steel Post	ASTM A992	*ASTM A123	-
d4	7	6"x12"x14 1/4" [152x305x362] Timber Blockout	SYP Grade No.1 or better	-	PDB10a
d5	6	6"x12"x19" [152x305x483] Timber Blockout	SYP Grade No.1 or better	-	-
d6	6	17 1/2" [445] Long, 7"x4"x3/16" [178x102x5] Iowa Steel Blockout	ASTM A500 Gr. B	*ASTM A123	-
d7	9	16D Double Head Nail	-	-	-

* Component does not need to be galvanized for testing purposes.



Midwest Roadside
Safety Facility

Standardized AGT
Buttress
Test No. AGTB-2

Bill of Materials

DWG. NAME.
AGT Buttress-2_R4

SCALE: None
UNITS: in.[mm]

SHEET:
22 of 23

DATE:
5/12/2017

DRAWN BY:
JEK

REV. BY:
SKR/JCH/
KAL/RKF

Item No.	QTY.	Description	Material Spec	Galvanization Spec	Hardware Guide
e1	12	1/2" [13] Dia., 86" [2,184] Long Bent Rebar	ASTM A615 Gr. 60	**Epoxy Coated (ASTM A775 or A934)	—
e2	1	1/2" [13] Dia., 62 3/4" [1,594] Long Bent Rebar	ASTM A615 Gr. 60	**Epoxy Coated (ASTM A775 or A934)	—
e3	1	1/2" [13] Dia., 60 1/2" [1,537] Long Bent Rebar	ASTM A615 Gr. 60	**Epoxy Coated (ASTM A775 or A934)	—
e4	1	1/2" [13] Dia., 59 1/4" [1,505] Long Bent Rebar	ASTM A615 Gr. 60	**Epoxy Coated (ASTM A775 or A934)	—
e5	1	1/2" [13] Dia., 74 3/4" [1,899] Long Bent Rebar	ASTM A615 Gr. 60	**Epoxy Coated (ASTM A775 or A934)	—
e6	3	1/2" [13] Dia., 37 1/4" [946] Long Rebar	ASTM A615 Gr. 60	**Epoxy Coated (ASTM A775 or A934)	—
e7	2	1/2" [13] Dia., 80 1/4" [2,038] Long Bent Rebar	ASTM A615 Gr. 60	**Epoxy Coated (ASTM A775 or A934)	—
e8	4	1/2" [13] Dia., 85 1/2" [2,171] Long Bent Rebar	ASTM A615 Gr. 60	**Epoxy Coated (ASTM A775 or A934)	—
e9	5	1/2" [13] Dia., 80" [2,032] Long Rebar	ASTM A615 Gr. 60	**Epoxy Coated (ASTM A775 or A934)	—
e10	1	1/2" [13] Dia., 80 1/2" [2,045] Long Bent Rebar	ASTM A615 Gr. 60	**Epoxy Coated (ASTM A775 or A934)	—
f1	18	5/8" [16] Dia. UNC, 14" [356] Long Guardrail Bolt and Nut	Bolt — ASTM A307 Gr. A Nut — ASTM A563A	ASTM A153 or B695 Class 55 or F2329	FBB06
f2	2	5/8" [16] Dia. UNC, 10" [254] Long Guardrail Bolt and Nut	Bolt — ASTM A307 Gr. A Nut — ASTM A563A	ASTM A153 or B695 Class 55 or F2329	FBB03
f3	24	5/8" [16] Dia. UNC, 2" [51] Long Guardrail Bolt and Nut	Bolt — ASTM A307 Gr. A Nut — ASTM A563A	ASTM A153 or B695 Class 55 or F2329	FBB02
f4	56	5/8" [16] Dia. UNC, 1 1/4" [32] Long Guardrail Bolt and Nut	Bolt — ASTM A307 Gr. A Nut — ASTM A563A	ASTM A153 or B695 Class 55 or F2329	FBB01
f5	5	7/8 [22] Dia. UNC, 14 [356] Long Heavy Hex Head Bolt and Nut	Bolt — ASTM F3125 Gr. 120 (A325) or A354 Gr. BC Nut — ASTM A563DH or A194 Gr. 2H	Bolt — ASTM A153 or B695 Class 55 or F1136 Gr. 3 or F2329 or F2833 Gr. 1 Nut — ASTM A153 or B633 or B695 Class 55 or F1941 or F2329	FBX22b
f6	2	7/8" [22] Dia. UNC, 8" [203] Long Hex Head Bolt and Nut	Bolt — ASTM A307 Gr. A Nut — ASTM A563A	ASTM A153 or B695 Class 55 or F2329	—
f7	2	5/8" [16] Dia. UNC, 10" [254] Long Hex Head Bolt and Nut	Bolt — ASTM A307 Gr. A Nut — ASTM A563A	ASTM A153 or B695 Class 55 or F2329	FBX16a
f8	20	5/8" [16] Dia. UNC, 1 1/2" [38] Long Hex Head Bolt and Nut	Bolt — ASTM A307 Gr. A Nut — ASTM A563A	ASTM A153 or B695 Class 55 or F2329	FBX16a
g1	4	7/8" [22] Dia. Plain Round Washer	ASTM F844	ASTM A123 or A153 or F2329	—
g2	46	5/8" [16] Dia. Plain Round Washer	ASTM F844	ASTM A123 or A153 or F2329	FWC16a
g3	5	3"x3"x1/4" [76x76x6] or 3 1/2"x3 1/2"x1/4" [89x89x6] Square Washer Plate	ASTM A572 Gr. 50	*ASTM A123	—

* Component does not need to be galvanized for testing purposes.

** Rebar does not need to be epoxy-coated for testing purposes.



Midwest Roadside
Safety Facility

Standardized AGT
Buttress
Test No. AGTB-2

Bill of Materials

DWG. NAME.

AGT Buttress-2_R4

SCALE: None

UNITS: in.[mm]

SHEET:
23 of 23

DATE:
5/12/2017

DRAWN BY:
JEK

REV. BY:
SKR/JCH/
KAL/RKF

REV.	DATE OF ISSUE	Page	NATURE OF CHANGES	REVIEWER	REVISED BY
0	4/26/2017	-	Drawing originated from AGT Buttress_R12. Buttress and rebar updated to Thrie_Buttress-1_R6 (3" shorter). Washers added at thrie shoe splice connection. Drawing standards updated throughout.	-	JEK
1	4/27/2017	4	Note 2 add.	SKR	JEK
		8	Blockout dim edit.		
		13	Dimension shift/add.		
		14	Horizontal rebar shift. Note 2 correction.		
		15	Offset of top rebar from edge of barrier rounded.		
		16	Dim edit. Table edits: e1-e5.		
		17	Bar e10 dim edit.		
		22	Description: e1-e5.		
2	5/11/2017	-	System flipped. Corresponding views altered. Galv specs updated.	JCH	JEK
3	5/11/2017	1	Label concrete/soil.	KAL	JEK
		2	Label shift.		
		4	Rebar hidden. Note add.		
		5-6	Separate shet 5 into 2 sheets, 5 & 6. Sheet title renaming. Shift. Dim adds. Note add. Label adds. Scale change.		
		7	Note add.		
		8	General shift. Alternate block description expanded. Scale note add.		
		9	Scale change (blockouts). Blockout note expanded.		
		10	W-post dim corrections.		
		17	Column header edit.		
		18	Column header edits.		
		20	Scale edit.		
		21	Part f6 nut height correction. Thread length f5, f6, f7.		
		BOM	Description: a3.		
4	5/12/2017	5	Note edit.	RKF/KAL	JEK
		17	Part e6 quantity correction.		
		BOM	Description: a6. Mtrl: a6.		